

5TH & MO TRANSFORMATION

5TH & MISSOURI
EAST ST. LOUIS, IL 62201

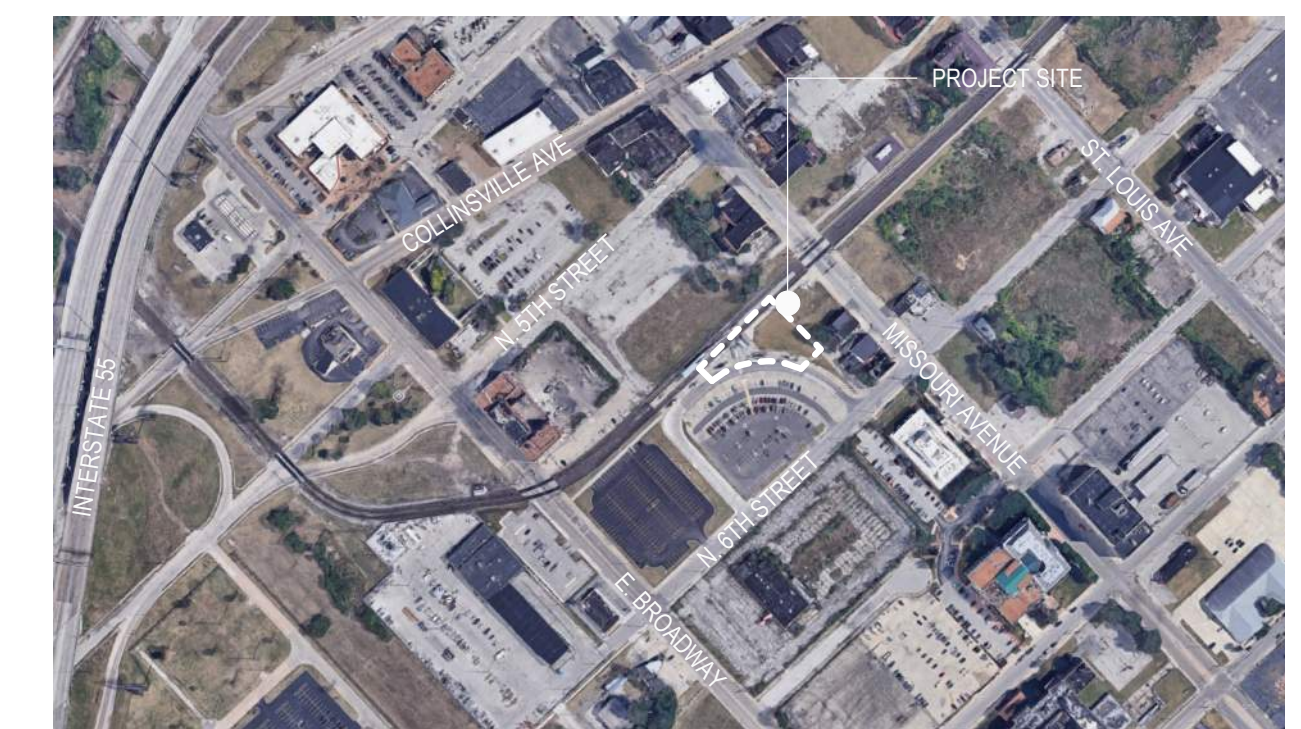
OWNER:
ST. CLAIR COUNTY TRANSIT DISTRICT
Tony Erwin, 27 N Illinois Ave, Belleville, IL 62220
TEL: 618.628.8090, EMAIL: terwin@scctd.org
TRIVERS PROJECT #: 22066.00

ARCHITECT:
TRIVERS
100 North Broadway, Suite 1800, St. Louis, MO 63102
314.241.2900
Project Manager:
Project Architect:

Joel Fuoss, AIA, LEED AP
Ross Welch, AIA, NOMA

LANDSCAPE ARCHITECT:
ARBOLOPE STUDIO
1219 S Boyle Ave St. Louis, MO 63110
314.769.9492
L. Irene Compadre, PLA, ASLA

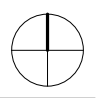
i@arbolope.com



Location Map

PRICING SET

03.13.2023



PROJECT GENERAL NOTES

STANDARDS & REGULATIONS

- 1. CONTRACTOR SHALL PERFORM ALL WORK IN CONFORMANCE W/ APPLICABLE BUILDING CODES, LOCAL, STATE & FEDERAL ORDINANCES & APPLICABLE REGULATORY AGENCIES...

ADMINISTRATION OF THE WORK

- 1. CONTRACTOR SHALL BE SOLELY RESPONSIBLE FOR THE MEANS, METHODS & SEQUENCES OF CONSTRUCTION...

USE OF CONSTRUCTION DOCUMENTS

- 1. CONTRACTOR SHALL NOT SCALE DRAWINGS; ONLY WRITTEN DIMENSIONS OR KEYED NOTES SHALL BE USED...

DEFINITIONS

- 1. "ALIGN" AS USED IN THESE DOCUMENTS SHALL MEAN TO ACCURATELY LOCATE & FINISH FACES IN THE SAME PLANE...

MATERIALS

- 1. ALL DISSIMILAR METAL MATERIALS SHALL BE ISOLATED W/ A NON-METALLIC SEPARATOR...

PROJECT GUIDE SPECIFICATIONS

DIVISION 03 - CONCRETE

- 1. CAST-IN-PLACE FOOTINGS, REINFORCED CONCRETE SHALL BE NORMAL WEIGHT AND HAVE A MINIMUM 28-DAY COMPRESSIVE STRENGTH OF 4,000 PSI...

DIVISION 05 - METALS

- 1. SUBMITTALS: PROVIDE SHOP DRAWINGS FOR METAL FABRICATION OF STEEL COMPONENTS...

DELEGATED DESIGN REQUIREMENTS: FABRICATOR SHALL CONTRACT A LICENSED STRUCTURAL ENGINEER RESPONSIBLE FOR ALL MEMBERS, CALCULATIONS AND CONNECTIONS TO COMPLY WITH VERTICAL AND LATERAL DESIGN LOADS...

DEMOLITION GENERAL NOTES

GENERAL REQUIREMENTS

- 1. A PORTION OF THE SELECTIVE DEMOLITION WORK IS DEFINED BY THESE GENERAL NOTES. NOT ALL ELEMENTS TO BE REMOVED SHOWN...

EXISTING STAIRS

- 1. PROTECT/ PRESERVE ALL EXISTING STAIRS, STEEL RUNNERS, WOOD HAND RAILING & STEEL PICKETS, U.N.O.

EXISTING DOORS

- 1. PROTECT/PRESERVE ALL EXTERIOR & INTERIOR DOORS, FRAMES, & TRIM, TO REMAIN U.N.O.

EXISTING INTERIOR WALLS, BASE & TRIM

- 1. PROTECT ALL INTERIOR PARTITIONS TO REMAIN, U.N.O.

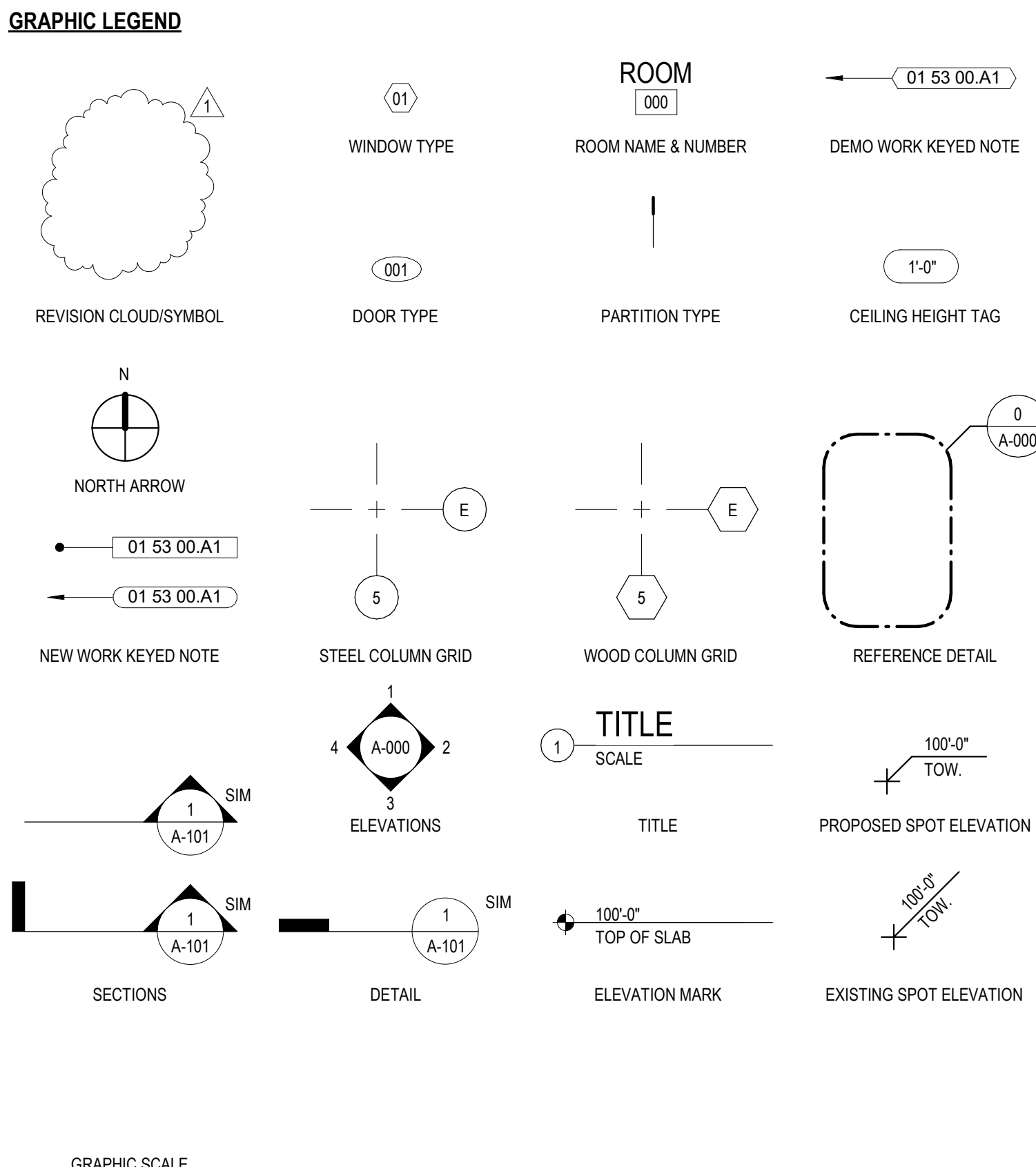
EXISTING WINDOWS

- 1. PROTECT & PRESERVE ALL EXISTING WINDOWS & CASINGS U.N.O.

EXISTING SIGNAGE

- 1. PROTECT & PRESERVE ALL EXISTING SIGNAGE BUILDING SIGNAGE NOT TO BE REPLACED U.N.O.

GRAPHIC LEGEND



ABBREVIATIONS

Table with 3 columns: Abbreviation, Description, and another Abbreviation/Description. Includes items like GA GALV GALVANIZED, ACT ANCHOR BOLT, AFF ABOVE FINISHED FLOOR, etc.

SHEET LIST TABLE

Table with columns: SHEET, NUMBER, TITLE, ISSUES & REVISIONS. Lists sheets A-100 through L-601 and their titles.

PROJECT SCOPE DIVISION OF RESPONSIBILITY

Table with columns: SCOPE ITEM, C.F.C.I., O.F.C.I., C.F.O.I. Lists items like DEMOLITION, CONCRETE REPAIR, LANDSCAPE PLANTINGS, etc.

NOTES: 1. COORDINATE WITH OWNER TO CONFIRM COMMUNITY PLANTING DAY FOR INSTALL OF PLANTINGS.

100 North Broadway, Suite 1800 St. Louis, MO 63102 314.241.2900 LANDSCAPE ARCHITECT: ARBOLOPE STUDIO 1219 S Boyle Ave St. Louis, MO 63110 314.769.9492

5TH & MO TRANSFORMATION 5TH & MISSOURI EAST ST. LOUIS, IL 62201 22066.00 5TH & MISSOURI TRANSFORMATION - PRICING SET

NOT FOR CONSTRUCTION

TRIVERS ASSOCIATES, INC. ORIGINAL LICENSE / CERTIFICATE #000549

These drawings have been prepared by Trivers Associates and contain proprietary and confidential information that is the intellectual property of Trivers Associates...

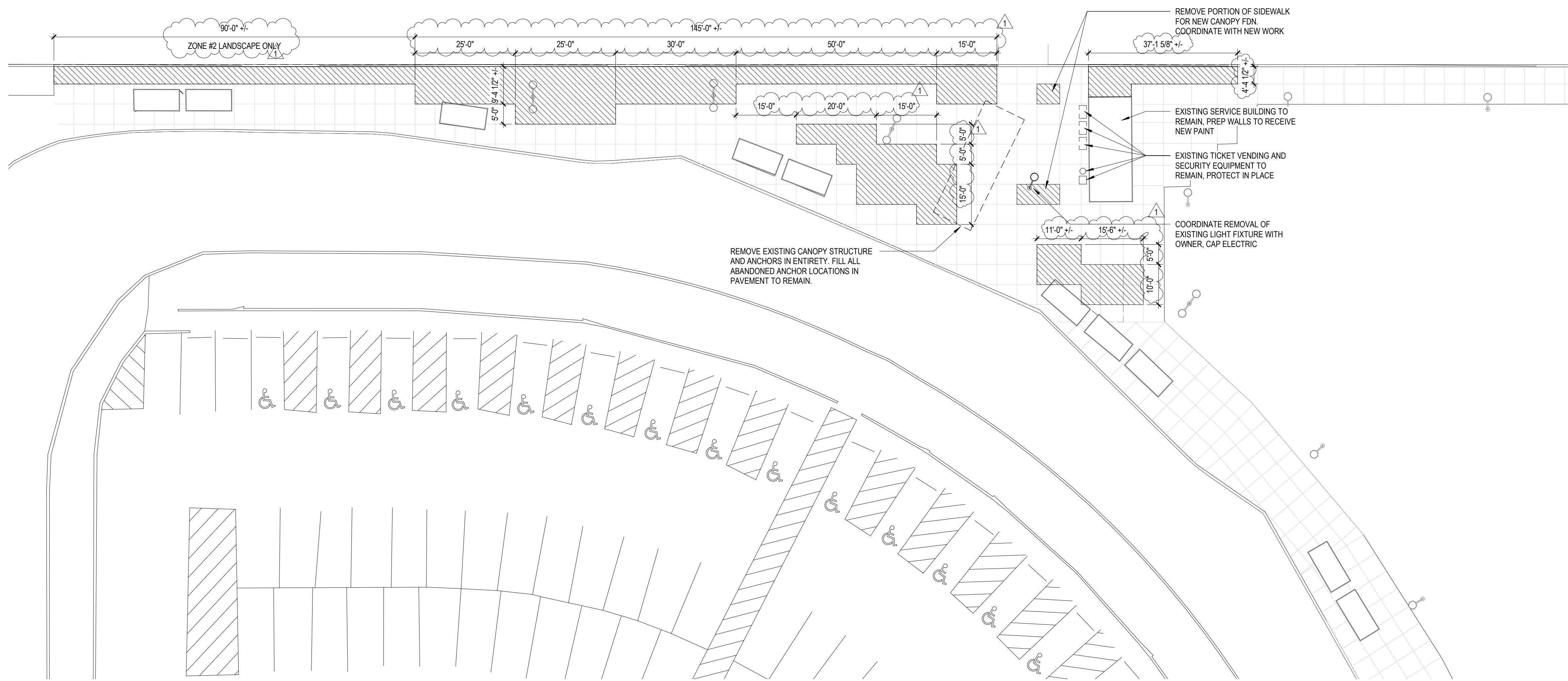
Trivers Associates, Inc. 2023

PROJECT #: 22066.00

Table with columns: No., Description, Date. Includes ADDENDUM #1 dated 03/27/2023.

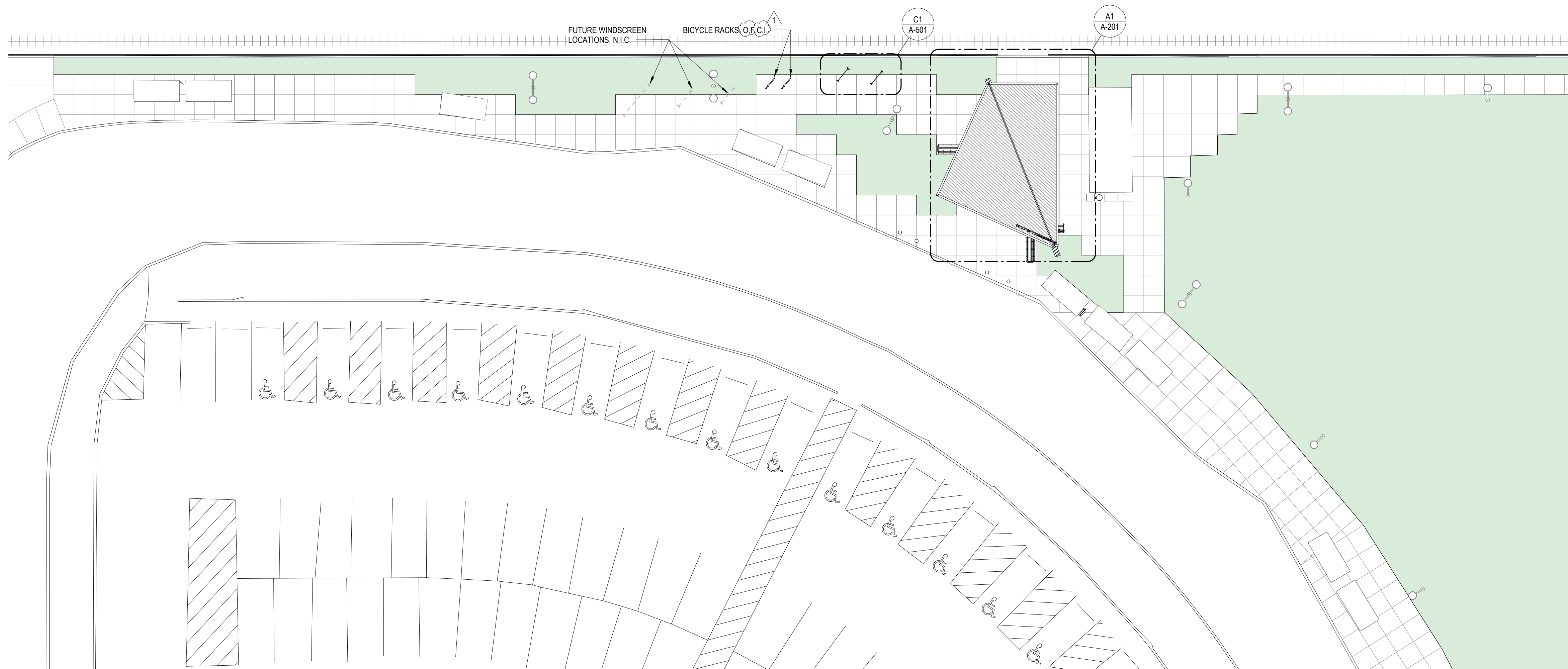
GENERAL NOTES & DRAWING ORGANIZATION

G-001



C1 DEMOLITION PLAN
1/16" = 1'-0"

SCALE: 1/16" = 1'-0" 0' 8' 16' 32'



A1 SITE PLAN
1/16" = 1'-0"

SCALE: 1/16" = 1'-0" 0' 8' 16' 32'

PROJECT GENERAL NOTES

- ALL WORK SHOWN ON DRAWINGS SHALL BE CONTRACTOR FURNISHED, CONTRACTOR INSTALLED (C.F.C.I.), UNLESS NOTED OTHERWISE. COORDINATE WITH OWNER FOR ALL ITEMS TO BE OWNER-FURNISHED, CONTRACTOR-INSTALLED (O.F.C.I.).
- PROJECT DRAWINGS ARE BASED ON FIELD OBSERVATIONS AND DOCUMENTATION PROVIDED BY OWNER. A SURVEY CONDUCTED BY A PROFESSIONAL LAND SURVEYOR HAS NOT BEEN PROVIDED IN ASSOCIATION WITH THIS PROJECT. **FIELD VERIFY ALL CONDITIONS PRIOR TO STARTING WORK AND COORDINATE WITH OWNER FOR NECESSARY ADJUSTMENTS.**
- LOCATE ALL UTILITIES AND COORDINATE WITH OWNER PRIOR TO STARTING WORK. ALL EXISTING LIGHT FIXTURES TO REMAIN, U.N.O. PROTECT IN-PLACE DURING COURSE OF CONSTRUCTION ACTIVITIES.
- EXISTING BUS SHELTERS TO REMAIN IN SERVICE. COORDINATE WITH OWNER FOR ANY SHELTERS TO BE REMOVED/RELOCATED TO FACILITATE DEMOLITION OR INSTALLATION OF NEW WORK.
- FIELD VERIFY LOCATION OF ALL CONCRETE TO BE REMOVED. COORDINATE EXTENT OF REMOVAL WITH FINAL SCOPE OF NEW LANDSCAPE WORK APPROVED BY OWNER. IDENTIFY ANY DISCREPANCIES WITH PLAN AND COORDINATE WITH ARCHITECT PRIOR TO STARTING WORK.
- SAWCUT ALL CONCRETE PAVING TO BE REMOVED AT NEAREST JOINT LINE - ALL DIMENSIONS SHOWN ARE APPROXIMATE TO BE OVERRIDDEN BY ALIGNMENT WITH PAVEMENT JOINTS. REMOVE CONCRETE AND SUB BASE TO DEPTH INDICATED ON LANDSCAPE DRAWINGS.
- ALL POWER FOR SITE ELEMENTS INDICATED ON DRAWINGS TO BE DESIGN-BUILD SCOPE PROVIDED BY ELECTRICAL CONTRACTOR.
- BENCH BASIS-OF-DESIGN - OWNER FURNISHED, CONTRACTOR INSTALLED:**
 - MADISON 6 THERMOFORM CONTOUR BENCH, MANUFACTURED BY ANOVA FINISHINGS. CONTACT: DAN SCHWEMER, 211 N. LINDBERGH BLVD., ST. LOUIS MO 63141, TEL: 314.680.2499, EMAIL: DAN.S@ANOVAFURNISHINGS.COM
 - FINISH: STANDARD COLOR FOR METAL FINISH TO BE SELECTED BY ARCHITECT
 - INCLUDE PROVISIONS FOR POST-INSTALLED CENTER DIVIDER TO MATCH THERMOFORM BENCH MATERIAL
- BICYCLE RACK BASIS-OF-DESIGN - OWNER FURNISHED, CONTRACTOR INSTALLED:**
 - DERO ROUND RACK, dero.com/products/round-rack
 - MOUNTING: SURFACE MOUNT
 - FINISH: MANUFACTURER'S STANDARD COLOR TO BE SELECTED BY ARCHITECT
 - COORDINATE WITH OWNERSHIP FOR AVAILABLE LOCAL SUPPLIER
- SIGNAGE BASIS-OF-DESIGN - OWNER FURNISHED, CONTRACTOR INSTALLED:**
 - MANUFACTURED BY DESIGNERY CREATIVE SOLUTIONS
 - CONTACT: REBECCA KING, 3051 BARTOLD AVE., ST. LOUIS MO 63143, TEL: 314.647.1700, EMAIL: REBECCA@DESIGNERY.COM
- LIGHTING BASIS-OF-DESIGN - CONTRACTOR FURNISHED, CONTRACTOR INSTALLED:**
 - SUPPLIED BY ST. LOUIS LIGHTING GROUP
 - CONTACT: DAVID ZIOLKOWSKI, MIES, L.C. LEED AP BD-C, 7414 MANCHESTER RD., ST. LOUIS, MO 63143, TEL: 314.704.1280, EMAIL: DAVID@STLOUISLIGHTINGGROUP.COM

PROJECT LEGEND

- CONCRETE PAVING TO BE REMOVED - ALIGN ALL SAWCUTS WITH NEAREST PAVEMENT JOINT
- NEW LANDSCAPE AREAS, RE: LANDSCAPE DRAWINGS

NOT FOR CONSTRUCTION

TRIVERS ASSOCIATES, INC.
ORIGINAL LICENSE /
CERTIFICATE #000549

These drawings have been prepared by Trivers Associates and contain proprietary and confidential information that is the intellectual property of Trivers Associates. Reproduction and use of these documents or the underlying design concepts contained therein without the prior and written permission of Trivers Associates is prohibited. These drawings have been prepared for use on a specific project. Each project is different and the use of these drawings on projects, other than the project for which they were created, is inappropriate. Trivers Associates assumes no responsibility or liability for the use of these drawings on projects other than the project for which they were created.

Trivers Associates, Inc. 2023
PROJECT #: 22066.00

No.	Description	Date
1	ADDENDUM #1	03/27/2023

DEMOLITION PLAN AND SITE PLAN

NOT FOR CONSTRUCTION

TRIVERS ASSOCIATES, INC.
ORIGINAL LICENSE /
CERTIFICATE #000549

These drawings have been prepared by Trivers Associates and contain proprietary and confidential information that is the intellectual property of Trivers Associates. Reproduction and use of these documents or the underlying design concepts contained therein without the prior written permission of Trivers Associates is prohibited. These drawings have been prepared for use on a specific project. Each project is different and the use of these drawings on projects other than the project for which they were created, is inappropriate. Trivers Associates assumes no responsibility or liability for the use of these drawings on projects other than the project for which they were created.

Trivers Associates, Inc. 2023

PROJECT # 22066.00

No.	Description	Date
1	ADDENDUM #1	03/27/2023

CANOPY - ENLARGED PLANS AND SECTIONS

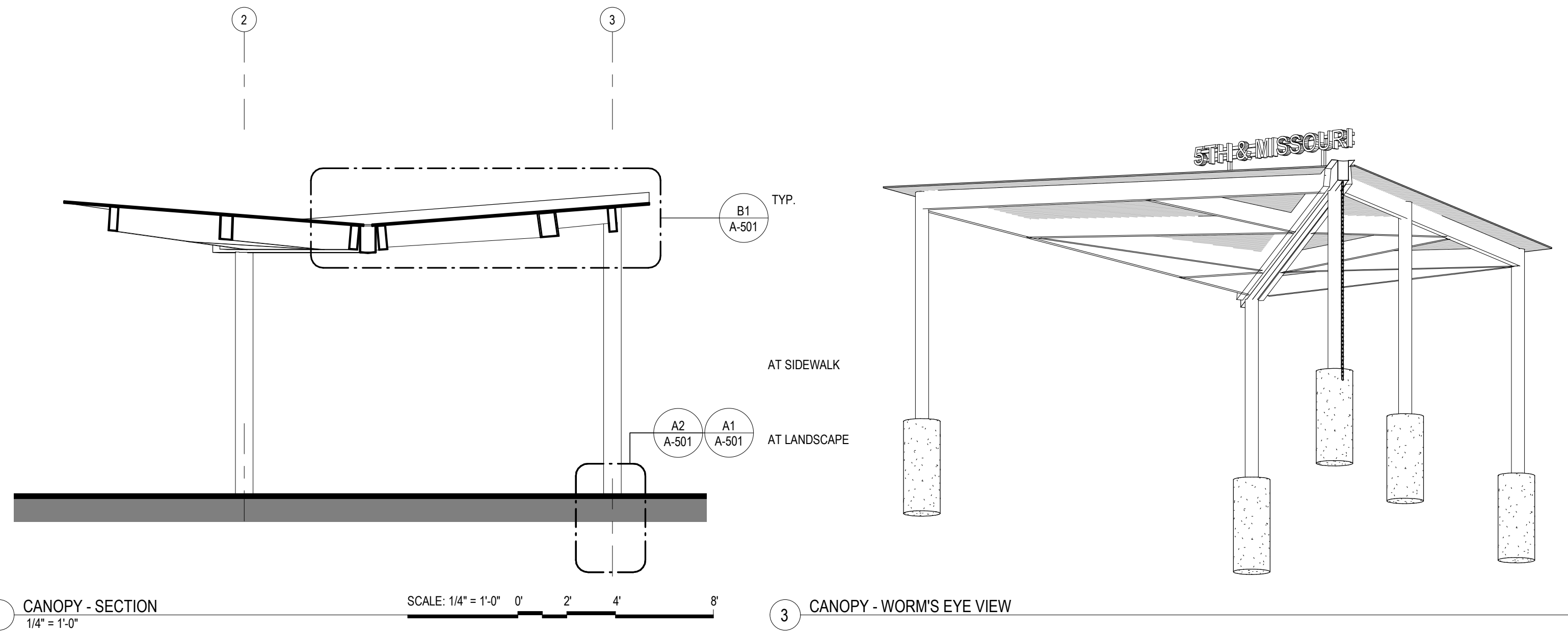
A-201

PROJECT GENERAL NOTES

- ALL WORK SHOWN ON DRAWINGS SHALL BE CONTRACTOR FURNISHED, CONTRACTOR INSTALLED (C.F.C.I.), UNLESS NOTED OTHERWISE. COORDINATE WITH OWNER FOR ALL ITEMS TO BE OWNER-FURNISHED, CONTRACTOR-INSTALLED (O.F.C.I.)
- PROJECT DRAWINGS ARE BASED ON FIELD OBSERVATIONS AND DOCUMENTATION PROVIDED BY OWNER. A SURVEY CONDUCTED BY A PROFESSIONAL LAND SURVEYOR HAS NOT BEEN PROVIDED IN ASSOCIATION WITH THIS PROJECT. **FIELD VERIFY ALL CONDITIONS PRIOR TO STARTING WORK AND COORDINATE WITH OWNER FOR NECESSARY ADJUSTMENTS.**
- LOCATE ALL UTILITIES AND COORDINATE WITH OWNER PRIOR TO STARTING WORK.
- ALL EXISTING LIGHT FIXTURES TO REMAIN, U.N.O. PROTECT IN-PLACE DURING COURSE OF CONSTRUCTION ACTIVITIES.
- EXISTING BUS SHELTERS TO REMAIN IN SERVICE. COORDINATE WITH OWNER FOR ANY SHELTERS TO BE REMOVED/RELOCATED TO FACILITATE DEMOLITION OR INSTALLATION OF NEW WORK.
- FIELD VERIFY LOCATION OF ALL CONCRETE TO BE REMOVED. COORDINATE EXTENT OF REMOVAL WITH FINAL SCOPE OF NEW LANDSCAPE WORK APPROVED BY OWNER. IDENTIFY ANY DISCREPANCIES WITH PLAN AND COORDINATE WITH ARCHITECT PRIOR TO STARTING WORK.
- SAWCUT ALL CONCRETE PAVING TO BE REMOVED AT NEAREST JOINT LINE - ALL DIMENSIONS SHOWN ARE APPROXIMATE TO BE OVERRIDDEN BY ALIGNMENT WITH PAVEMENT JOINTS. REMOVE CONCRETE AND SUB BASE TO DEPTH INDICATED ON LANDSCAPE DRAWINGS.
- ALL POWER FOR SITE ELEMENTS INDICATED ON DRAWINGS TO BE DESIGN-BUILD SCOPE PROVIDED BY ELECTRICAL CONTRACTOR.
- BENCH BASIS-OF-DESIGN - OWNER FURNISHED, CONTRACTOR INSTALLED:**
 - MADISON 6 THERMORY CONTOUR BENCH, MANUFACTURED BY ANOVA FURNISHINGS. CONTACT: DAN SCHIRMER, 211 N. LINDBERGH BLVD., ST. LOUIS MO 63141, TEL: 314.880.2499, EMAIL: DAN.S@ANOVAFURNISHINGS.COM
 - FINISH: STANDARD COLOR FOR METAL FINISH TO BE SELECTED BY ARCHITECT
 - INCLUDE PROVISIONS FOR POST-INSTALLED CENTER DIVIDER TO MATCH THERMORY BENCH MATERIAL.
- BICYCLE RACK BASIS-OF-DESIGN - OWNER FURNISHED, CONTRACTOR INSTALLED:**
 - DERO ROUND RACK, dero.com/products/round-rack
 - MOUNTING: SURFACE MOUNT
 - FINISH: MANUFACTURER'S STANDARD COLOR TO BE SELECTED BY ARCHITECT
 - COORDINATE WITH OWNERSHIP FOR AVAILABLE LOCAL SUPPLIER.
- SIGNAGE BASIS-OF-DESIGN - OWNER FURNISHED, CONTRACTOR INSTALLED:**
 - MANUFACTURED BY DESIGNERY CREATIVE SOLUTIONS
 - CONTACT: REBECCA KING, 3051 BARTOLD AVE, ST. LOUIS MO 63143, TEL: 314.647.1700, EMAIL: REBECCA@DESIGNERY.COM
- LIGHTING BASIS-OF-DESIGN - CONTRACTOR FURNISHED, CONTRACTOR INSTALLED:**
 - SUPPLIED BY ST. LOUIS LIGHTING GROUP
 - CONTACT: DAVID ZIOLKOWSKI, MIES, LC, LEED AP BD+C, 7414 MANCHESTER RD., ST. LOUIS, MO 63143, TEL: 314.704.1280, EMAIL: DAVID@STLOUISLIGHTINGGROUP.COM

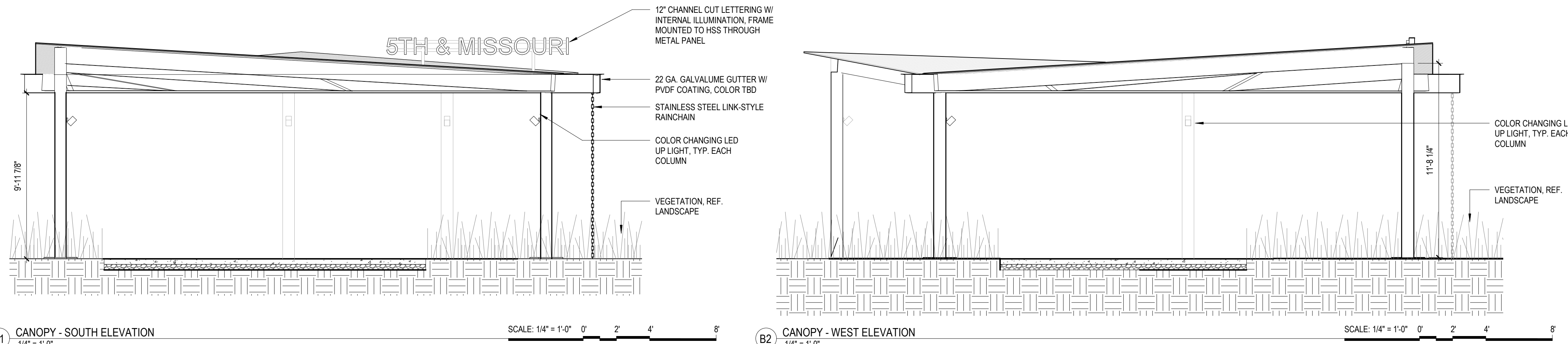
PROJECT LEGEND

- CONCRETE PAVING TO BE REMOVED - ALIGN ALL SAWCUTS WITH NEAREST PAVEMENT JOINT
- NEW LANDSCAPE AREAS, RE: LANDSCAPE DRAWINGS



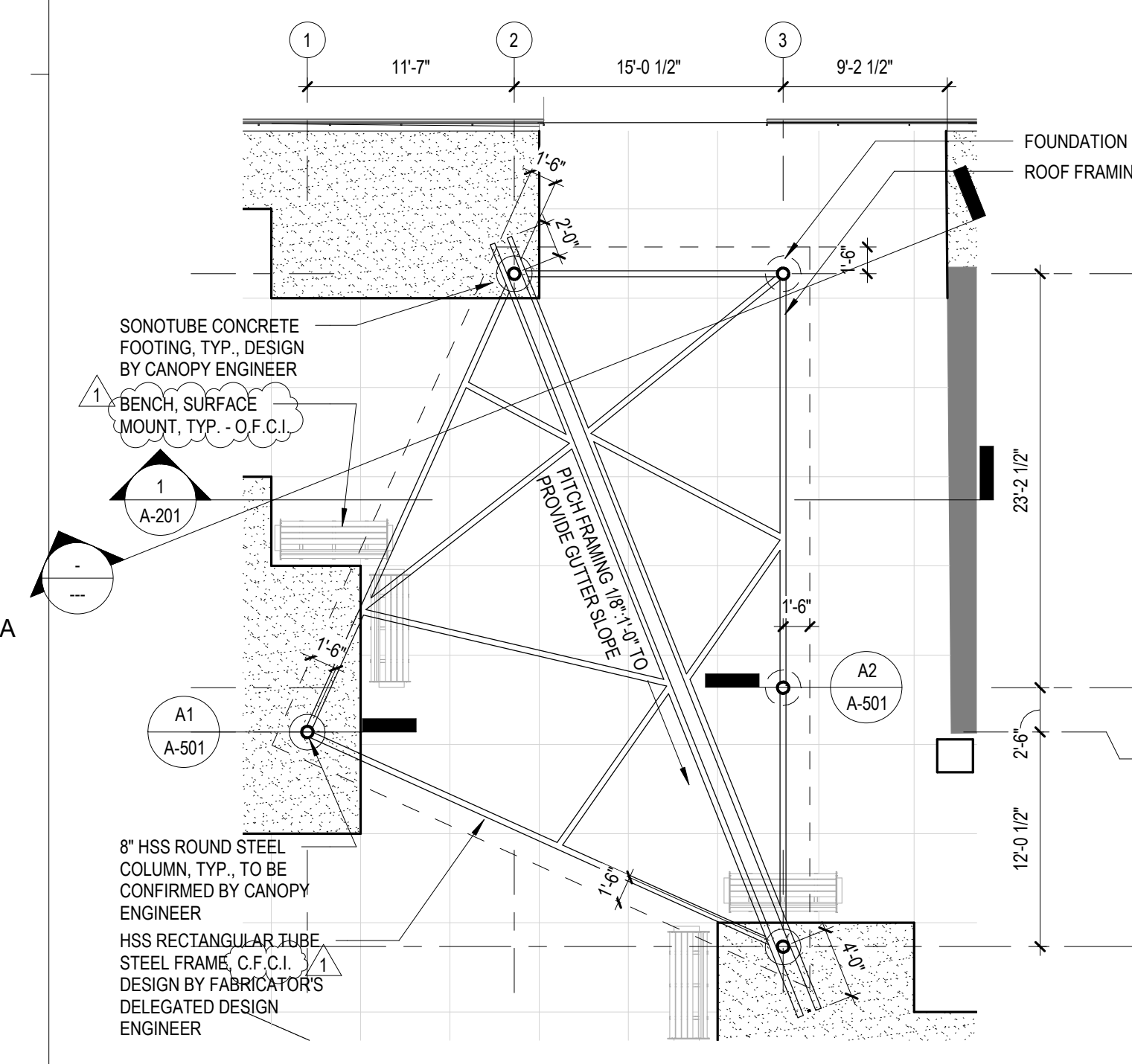
1 CANOPY - SECTION
1/4" = 1'-0"

3 CANOPY - WORM'S EYE VIEW
1/4" = 1'-0"

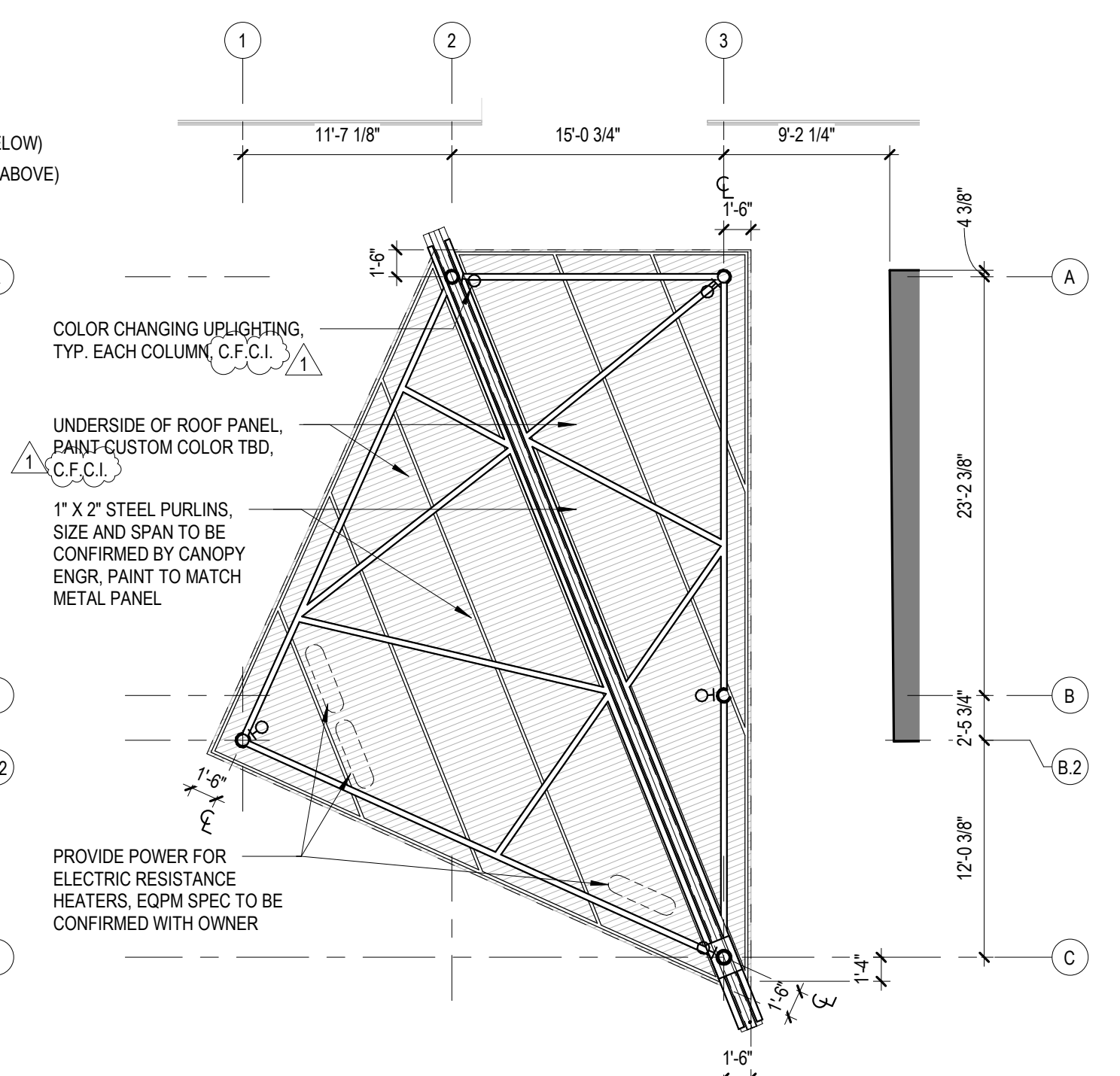


B1 CANOPY - SOUTH ELEVATION
1/4" = 1'-0"

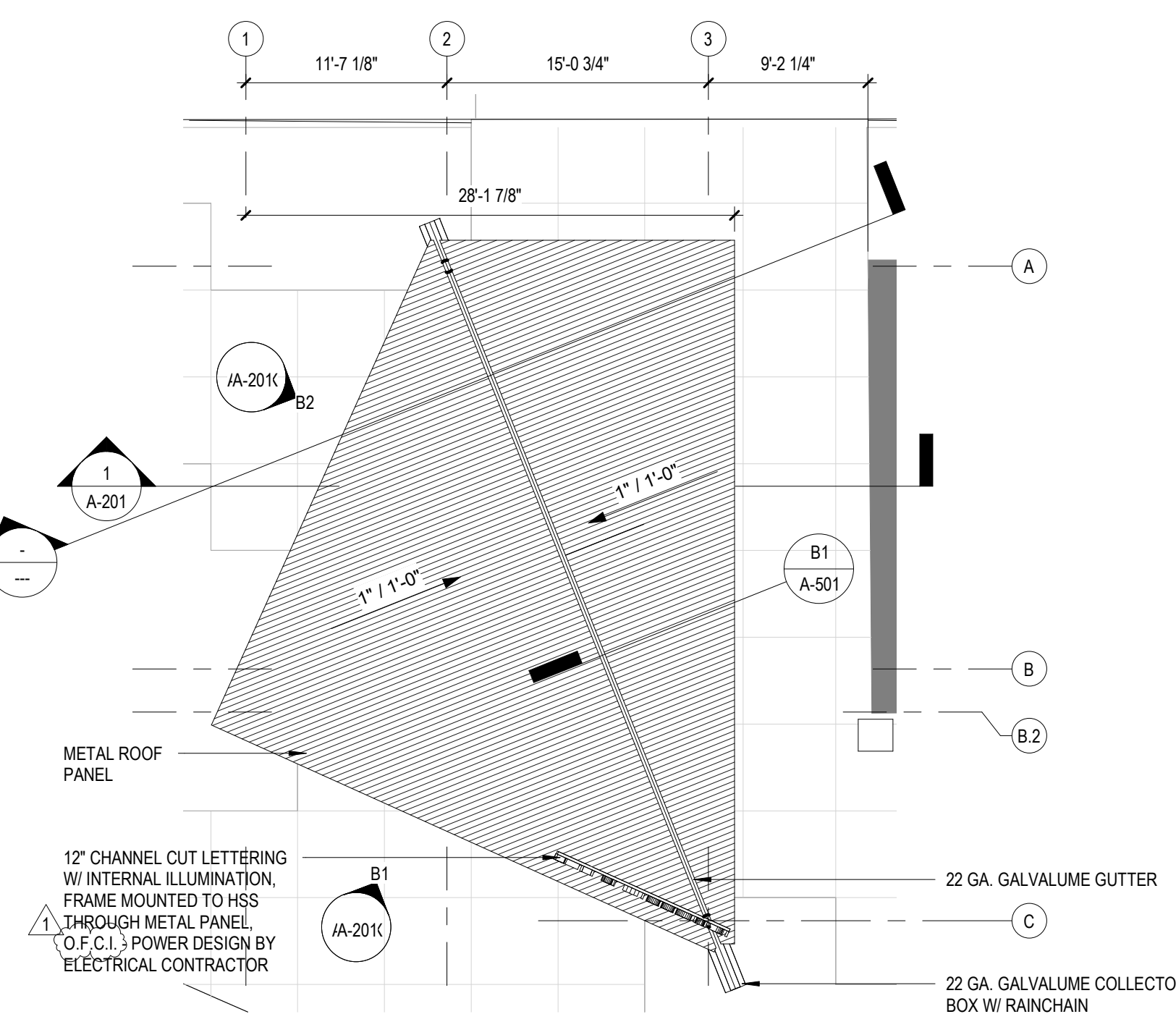
B2 CANOPY - WEST ELEVATION
1/4" = 1'-0"



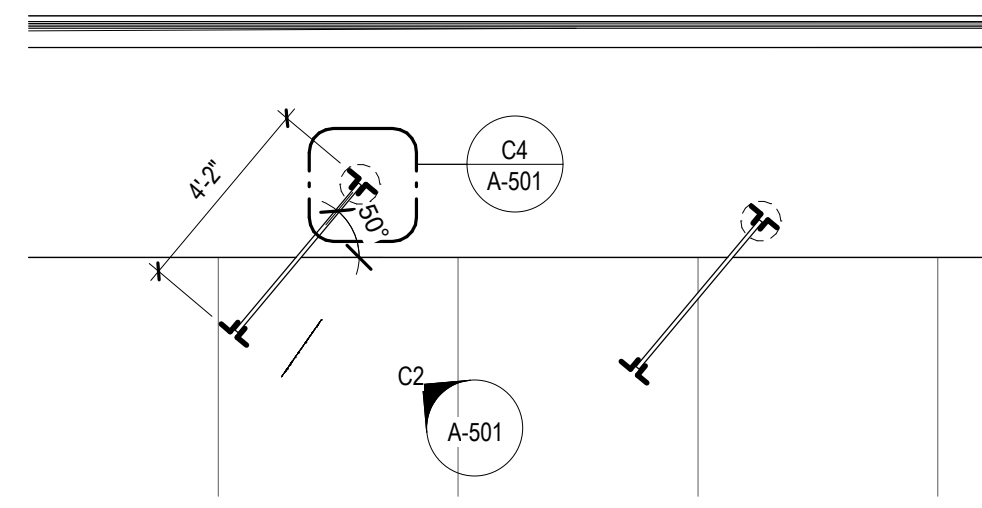
A1 CANOPY FRAMING PLAN
1/8" = 1'-0"



A2 CANOPY REFLECTED CEILING PLAN
1/8" = 1'-0"

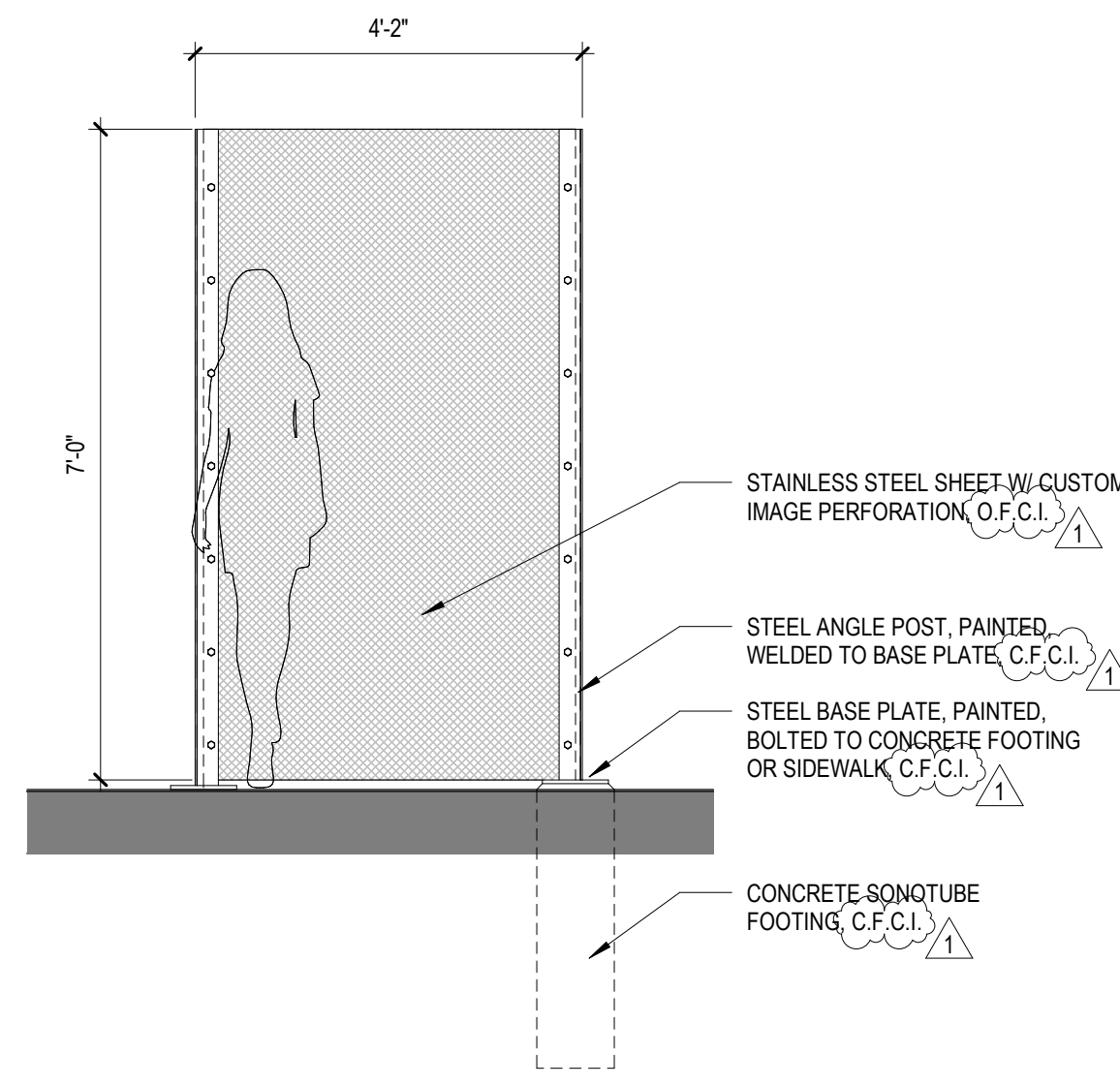


A3 CANOPY ROOF PLAN
1/8" = 1'-0"



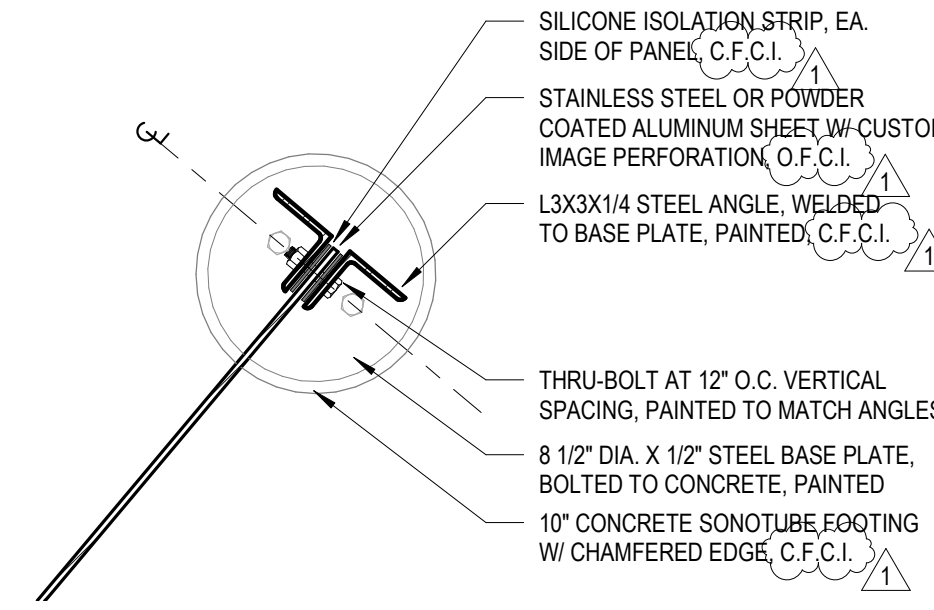
C1 FLOOR PLAN - WINDSCREENS
1/4" = 1'-0"

SCALE: 1/4" = 1'-0" 0' 2' 4' 8'



C2 ELEVATION - WINDSCREEN
1/2" = 1'-0"

SCALE: 1/2" = 1'-0" 0' 1' 2' 4'



C4 PLAN DETAIL - WINDSCREEN ATTACHMENT
1 1/2" = 1'-0"

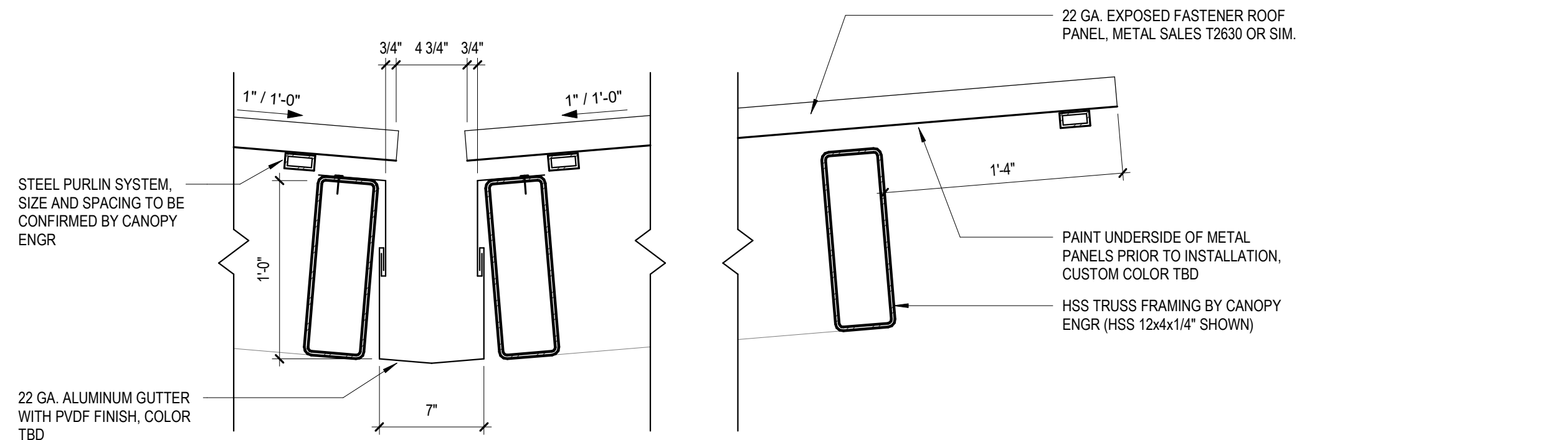
SCALE: 1 1/2" = 1'-0" 0' 1/2' 1' 1 1/2'

PROJECT GENERAL NOTES

- ALL WORK SHOWN ON DRAWINGS SHALL BE CONTRACTOR FURNISHES, CONTRACTOR INSTALLED (C.F.C.I.), UNLESS NOTED OTHERWISE. COORDINATE WITH OWNER FOR ALL ITEMS TO BE OWNER-FURNISHED, CONTRACTOR-INSTALLED (O.F.C.I.)
- PROJECT DRAWINGS ARE BASED ON FIELD OBSERVATIONS AND DOCUMENTATION PROVIDED BY OWNER. A SURVEY CONDUCTED BY A PROFESSIONAL LAND SURVEYOR HAS NOT BEEN PROVIDED IN ASSOCIATION WITH THIS PROJECT. **FIELD VERIFY ALL CONDITIONS PRIOR TO STARTING WORK AND COORDINATE WITH OWNER FOR NECESSARY ADJUSTMENTS.**
- LOCATE ALL UTILITIES AND COORDINATE WITH OWNER PRIOR TO STARTING WORK. ALL EXISTING LIGHT FIXTURES TO REMAIN, U.N.O. PROTECT IN-PLACE DURING COURSE OF CONSTRUCTION ACTIVITIES.
- EXISTING BUS SHELTERS TO REMAIN IN SERVICE. COORDINATE WITH OWNER FOR ANY SHELTERS TO BE REMOVED/RELOCATED TO FACILITATE DEMOLITION OR INSTALLATION OF NEW WORK.
- FIELD VERIFY LOCATION OF ALL CONCRETE TO BE REMOVED. COORDINATE EXTENT OF REMOVAL WITH FINAL SCOPE OF NEW LANDSCAPE WORK APPROVED BY OWNER. IDENTIFY ANY DISCREPANCIES WITH PLAN AND COORDINATE WITH ARCHITECT PRIOR TO STARTING WORK.
- SAWCUT ALL CONCRETE PAVING TO BE REMOVED AT NEAREST JOINT LINE - ALL DIMENSIONS SHOWN ARE APPROXIMATE TO BE OVERRIDDEN BY ALIGNMENT WITH PAVEMENT JOINTS. REMOVE CONCRETE AND SUB BASE TO DEPTH INDICATED ON LANDSCAPE DRAWINGS.
- ALL POWER FOR SITE ELEMENTS INDICATED ON DRAWINGS TO BE DESIGN-BUILD SCOPE PROVIDED BY ELECTRICAL CONTRACTOR.
- BENCH BASIS-OF-DESIGN - OWNER FURNISHED, CONTRACTOR INSTALLED:**
 - MADISON 6 THERMORY CONTOUR BENCH, MANUFACTURED BY ANOVA FURNISHINGS. CONTACT: DAN SCHWEMER, 211 N. LINDBERGH BLVD., ST. LOUIS MO 63141, TEL: 314.680.2499, EMAIL: DAN.S@ANOVAFURNISHINGS.COM
 - FINISH: STANDARD COLOR FOR METAL FINISH TO BE SELECTED BY ARCHITECT
 - INCLUDE PROVISIONS FOR POST-INSTALLED CENTER DIVIDER TO MATCH THERMORY BENCH MATERIAL
- BICYCLE RACK BASIS-OF-DESIGN - OWNER FURNISHED, CONTRACTOR INSTALLED:**
 - DERO ROUND RACK, dero.com/products/round-rack
 - MOUNTING: SURFACE MOUNT
 - FINISH: MANUFACTURER'S STANDARD COLOR TO BE SELECTED BY ARCHITECT
 - COORDINATE WITH OWNERSHIP FOR AVAILABLE LOCAL SUPPLIER
- SIGNAGE BASIS-OF-DESIGN - OWNER FURNISHED, CONTRACTOR INSTALLED:**
 - MANUFACTURED BY DESIGNERY CREATIVE SOLUTIONS
 - CONTACT: REBECCA KING, 3051 BARTOLD AVE., ST. LOUIS MO 63143, TEL: 314.647.1700, EMAIL: REBECCA@DESIGNERY.COM
- LIGHTING BASIS-OF-DESIGN - CONTRACTOR FURNISHED, CONTRACTOR INSTALLED:**
 - SUPPLIED BY ST. LOUIS LIGHTING GROUP
 - CONTACT: DAVID ZIOLKOWSKI, MIES, L.C. LEED AP BD+C, 7414 MANCHESTER RD., ST. LOUIS, MO 63143, TEL: 314.704.1280, EMAIL: DAVID@STLOUISLIGHTINGGROUP.COM

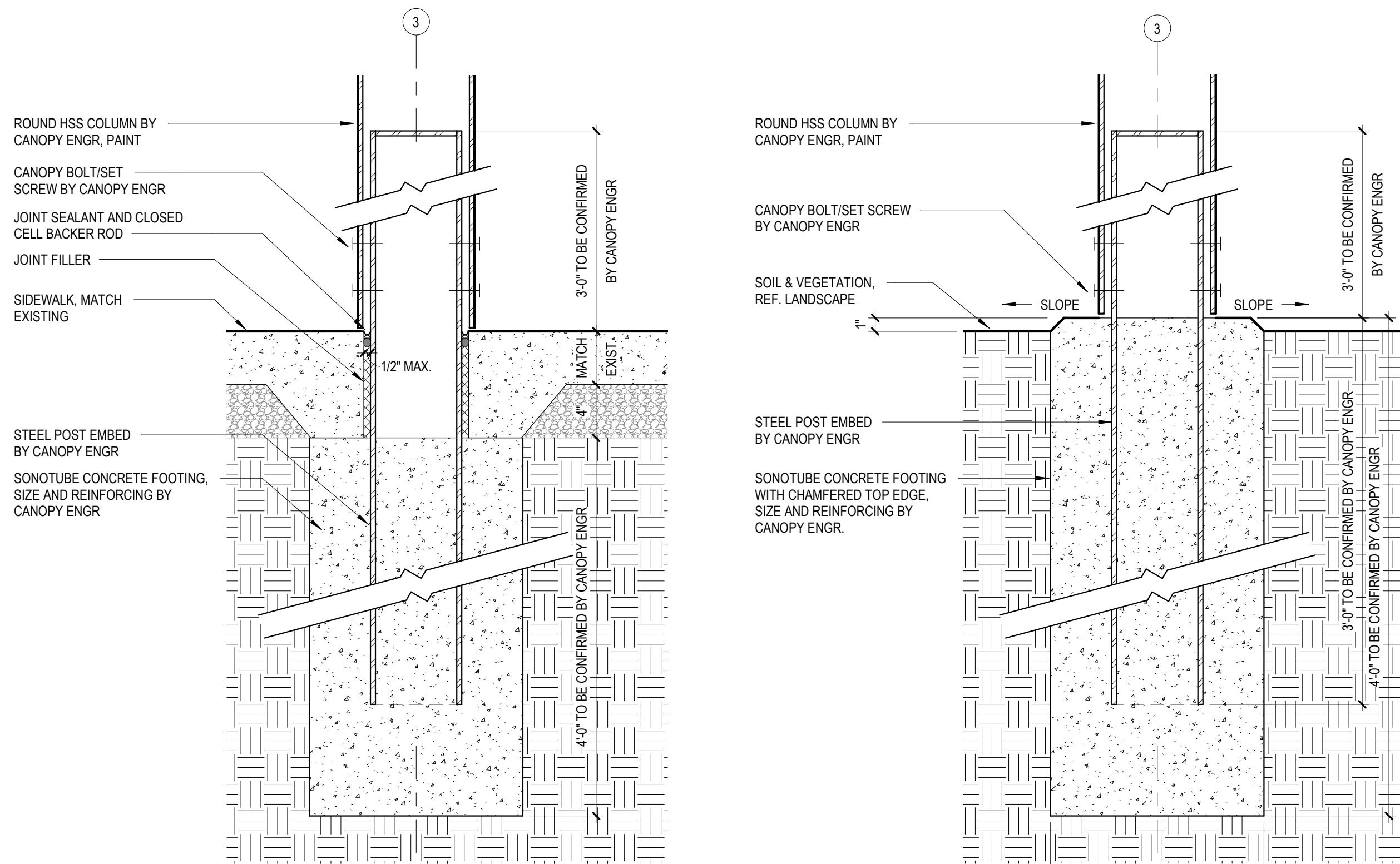
PROJECT LEGEND

- CONCRETE PAVING TO BE REMOVED - ALIGN ALL SAWCUTS WITH NEAREST PAVEMENT JOINT
- NEW LANDSCAPE AREAS, RE: LANDSCAPE DRAWINGS



B1 CANOPY SECTION DETAIL - GUTTER AND FASCIA
1 1/2" = 1'-0"

SCALE: 1 1/2" = 1'-0" 0' 1/2' 1' 1 1/2'



A1 CANOPY SECTION DETAIL @ SIDEWALK
1 1/2" = 1'-0"

SCALE: 1 1/2" = 1'-0" 0' 1/2' 1' 1 1/2'

A2 CANOPY SECTION DETAIL @ LANDSCAPE
1 1/2" = 1'-0"

SCALE: 1 1/2" = 1'-0" 0' 1/2' 1' 1 1/2'

NOT FOR CONSTRUCTION

TRIVERS ASSOCIATES, INC.
ORIGINAL LICENSE /
CERTIFICATE #000549

These drawings have been prepared by Trivers Associates and contain proprietary and confidential information that is the intellectual property of Trivers Associates. Reproduction and use of these documents or the underlying design concepts contained therein without the prior and written permission of Trivers Associates is prohibited. These drawings have been prepared for use on a specific project. Each project is different and the use of these drawings on projects other than the project for which they were created is inappropriate. Trivers Associates assumes no responsibility or liability for the use of these drawings on projects other than the project for which they were created.

Trivers Associates, Inc. 2023

PROJECT #: 22066.00

No.	Description	Date
1	ADDENDUM #1	03/27/2023

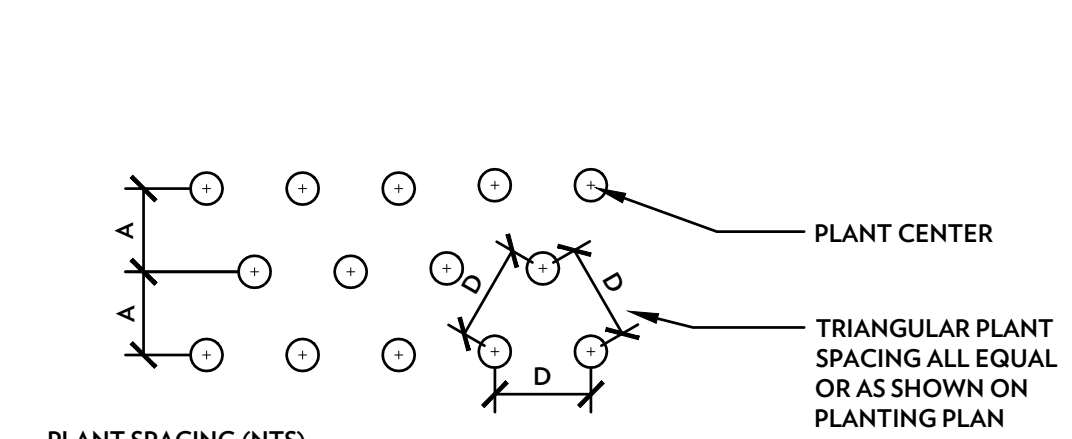
DETAILS - SITE

ARBLOPE STUDIO, LLC.
These drawings have been prepared by Trivers Associates and contain proprietary and confidential information that is the intellectual property of Trivers Associates. Reproduction and use of these documents or the underlying design concepts contained therein without the prior and written permission of Trivers Associates is prohibited. These drawings have been prepared for use on a specific project. Each project is different and the use of these drawings on projects, other than the project for which they were created, is inappropriate. Trivers Associates assumes no responsibility or liability for the use of these drawings on projects other than the project for which they were created.

Trivers Associates, Inc. 2023
PROJECT #: 22066.00

No.	Description	Date

PLANTING DETAIL

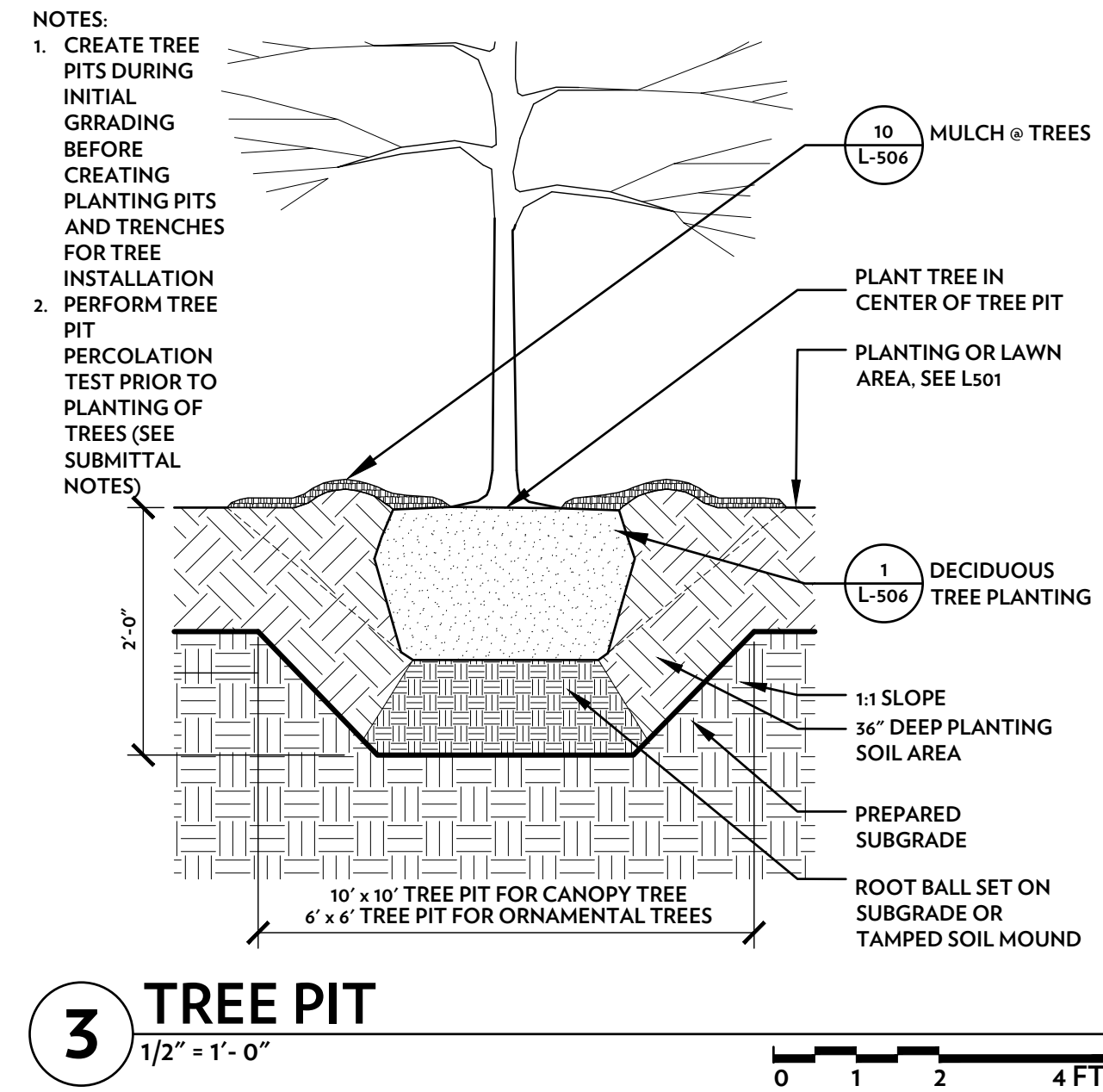


PLANT SPACING (NTS)

SPACING "D"	ROW "A"	PLANTS PER SQ. FT.
8" O.C.	6.93"	0.046
5" O.C.	5.2"	0.075
4" O.C.	41.5"	0.12
36" O.C.	30"	0.185
30" O.C.	26"	0.29
24" O.C.	20.8"	0.50
18" O.C.	15.6"	0.759
15" O.C.	13"	1.15
12" O.C.	10.4"	1.66
10" O.C.	8.7"	2.60
8" O.C.	6.9"	4.61
6" O.C.	5.2"	

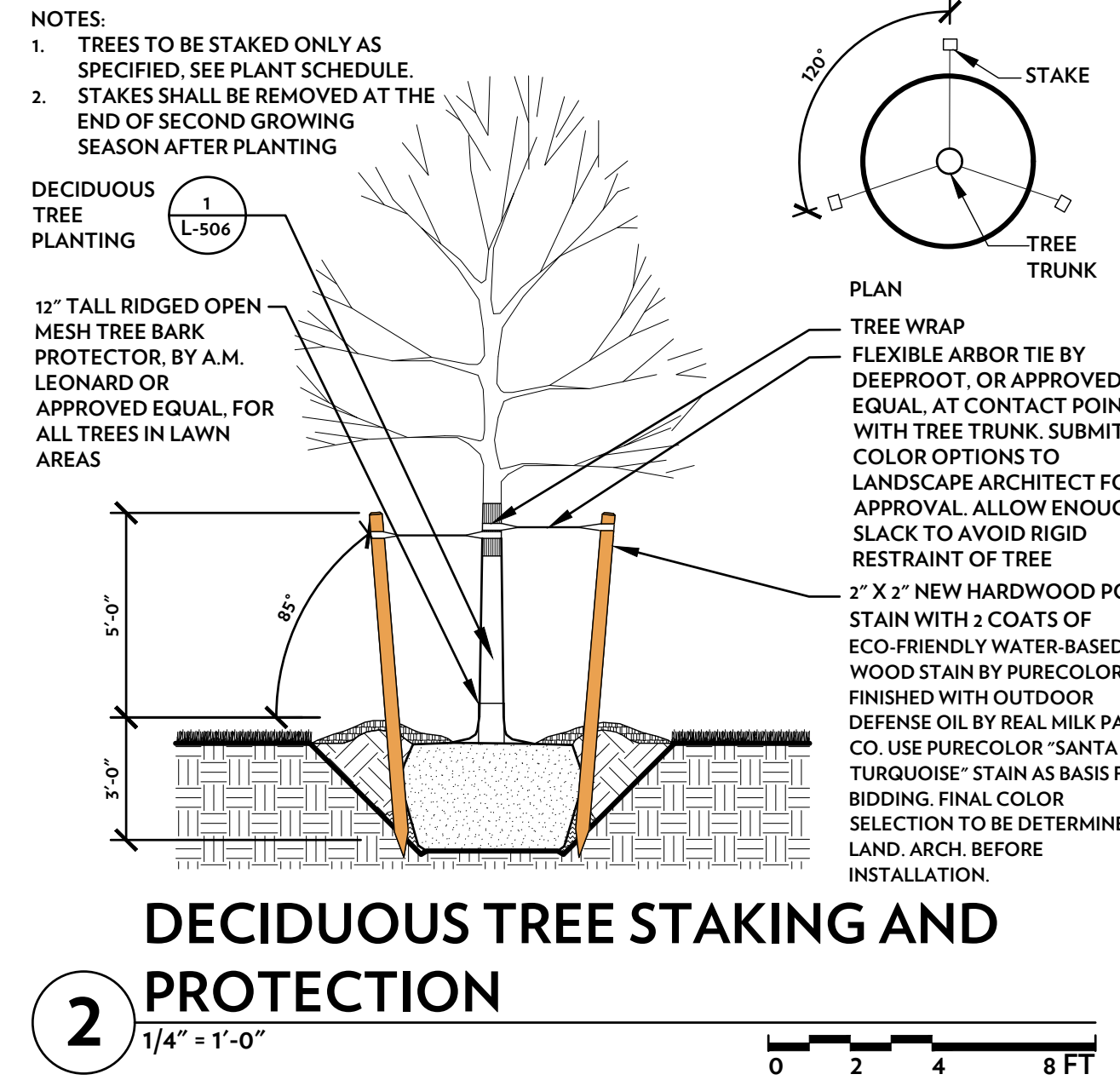
NOTES:
PLANT QUANTITIES WERE DETERMINED BY MULTIPLYING AREA (SQ. FT.) BY NUMBER OF PLANTS PER SQ. FT. FOR REQUIRED SPACING

4 PLANT SPACING GUIDE
NTS



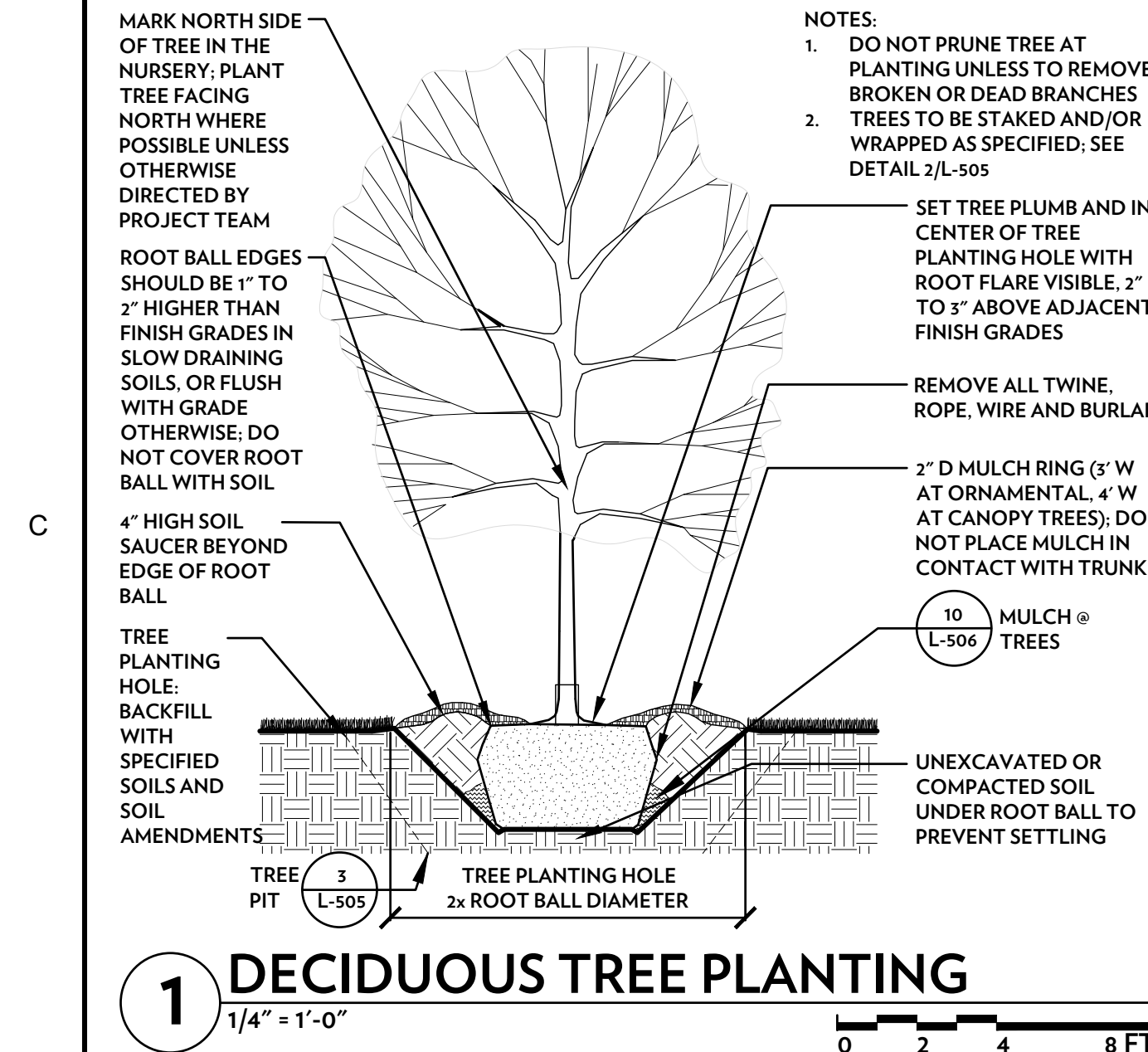
NOTES:
1. CREATE TREE PITS DURING INITIAL GRADING BEFORE CREATING PLANTING PITS AND TRENCHES FOR TREE INSTALLATION
2. PERFORM TREE PIT PERCOLATION TEST PRIOR TO PLANTING OF TREES (SEE SUBMITTAL NOTES)

3 TREE PIT
1/2" = 1'-0"



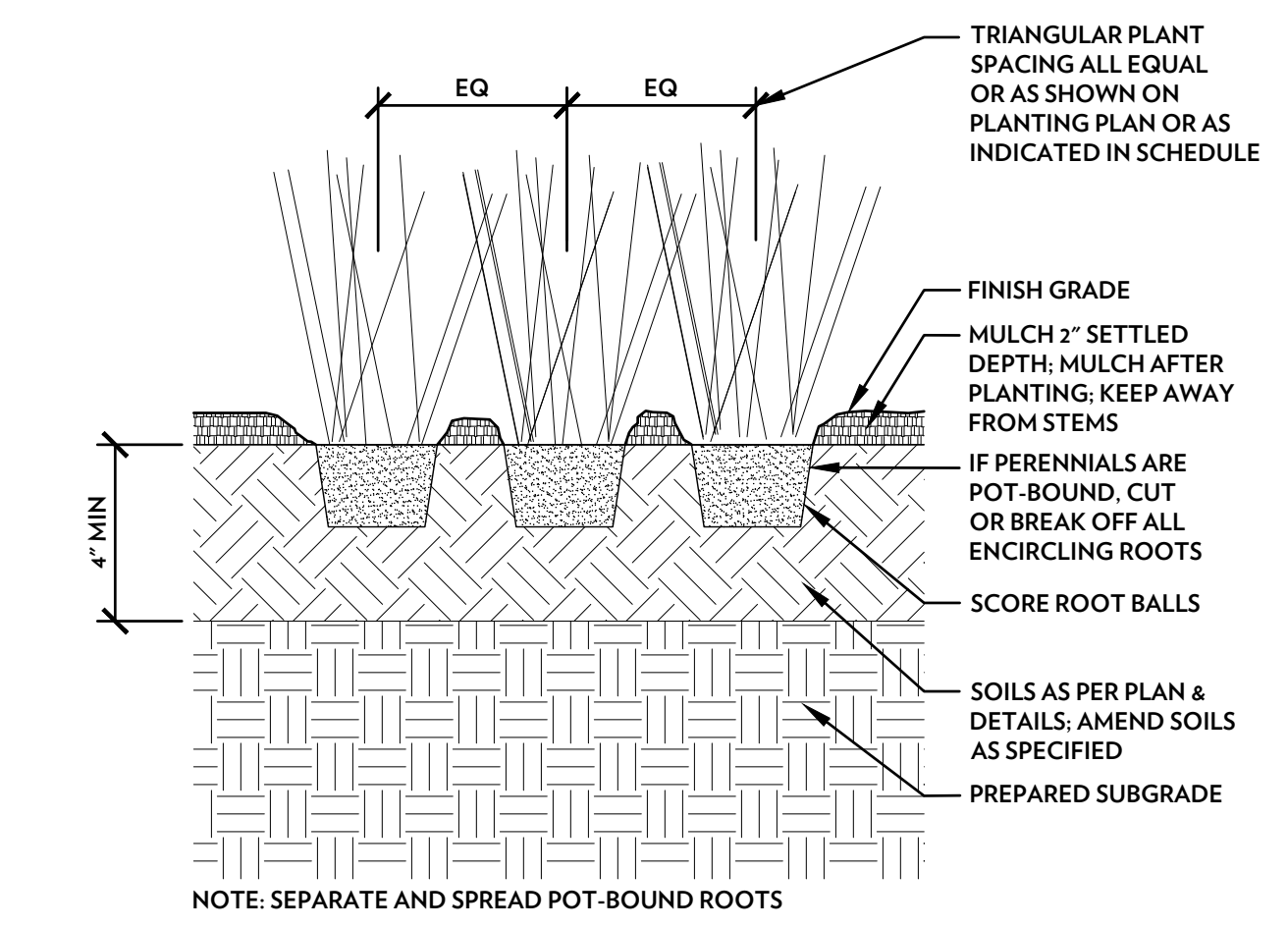
NOTES:
1. TREES TO BE STAKED ONLY AS SPECIFIED. SEE PLANT SCHEDULE.
2. STAKES SHALL BE REMOVED AT THE END OF SECOND GROWING SEASON AFTER PLANTING

2 DECIDUOUS TREE STAKING AND PROTECTION
1/4" = 1'-0"

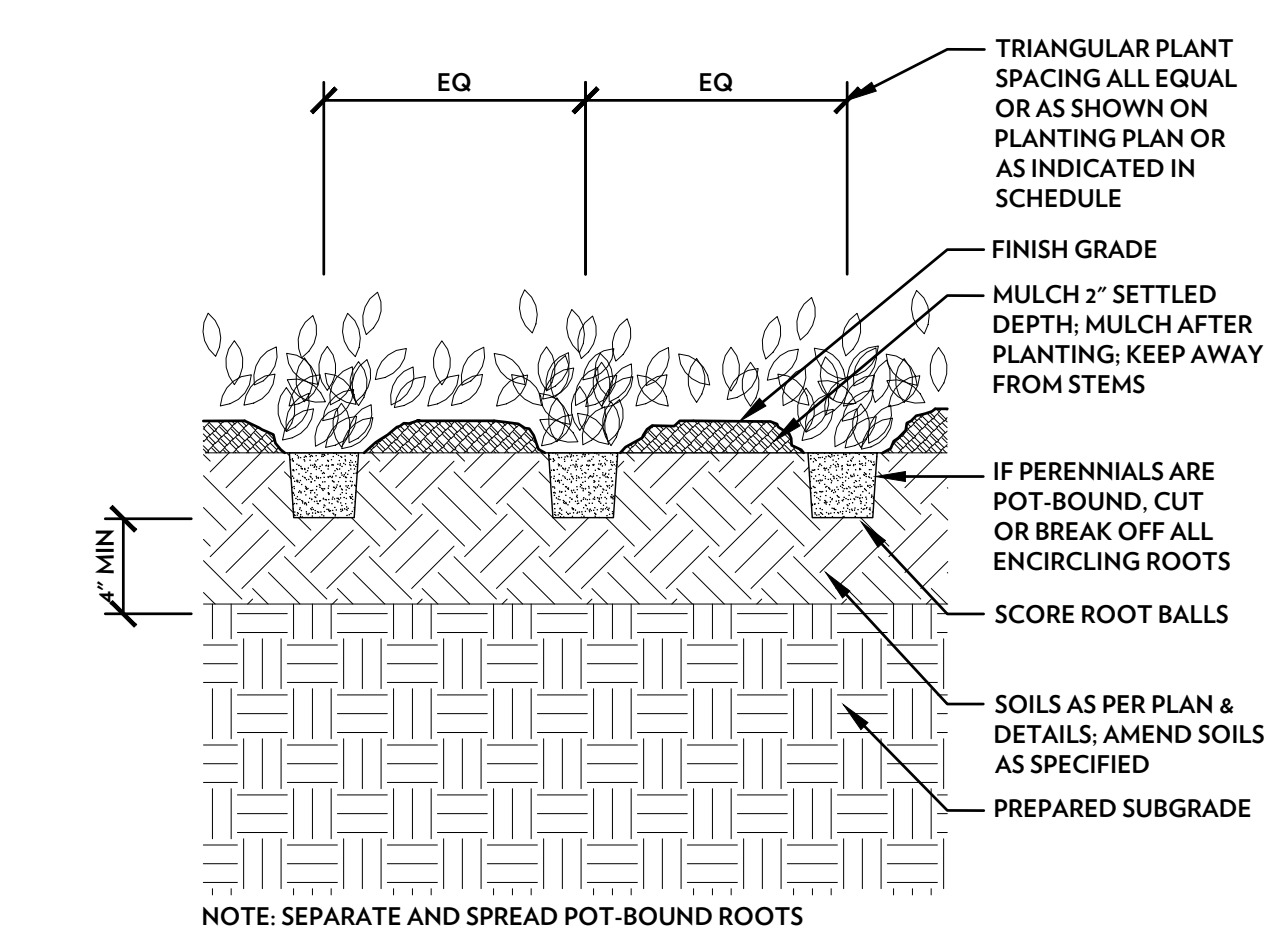


MARK NORTH SIDE OF TREE IN THE NURSERY. PLANT TREE FACING NORTH WHERE POSSIBLE UNLESS OTHERWISE DIRECTED BY PROJECT TEAM
ROOT BALL EDGES SHOULD BE 1" TO 2" HIGHER THAN FINISH GRADES IN SLOW DRAINING SOILS, OR FLUSH WITH GRADE OTHERWISE. DO NOT COVER ROOT BALL WITH SOIL
4" HIGH SOIL SAUCER BEYOND EDGE OF ROOT BALL
TREE PLANTING HOLE: BACKFILL WITH SPECIFIED SOILS AND SOIL AMENDMENTS
SET TREE PLUMB AND IN CENTER OF TREE PLANTING HOLE WITH ROOT FLARE VISIBLE. 2" TO 5" ABOVE ADJACENT FINISH GRADES
REMOVE ALL TWINE, ROPE, WIRE AND BURLAP
2" D MULCH RING (3" W AT ORNAMENTAL, 4" W AT CANOPY TREES). DO NOT PLACE MULCH IN CONTACT WITH TRUNK
10" MULCH @ TREES
UNEXCAVATED OR COMPACTED SOIL UNDER ROOT BALL TO PREVENT SETTLING

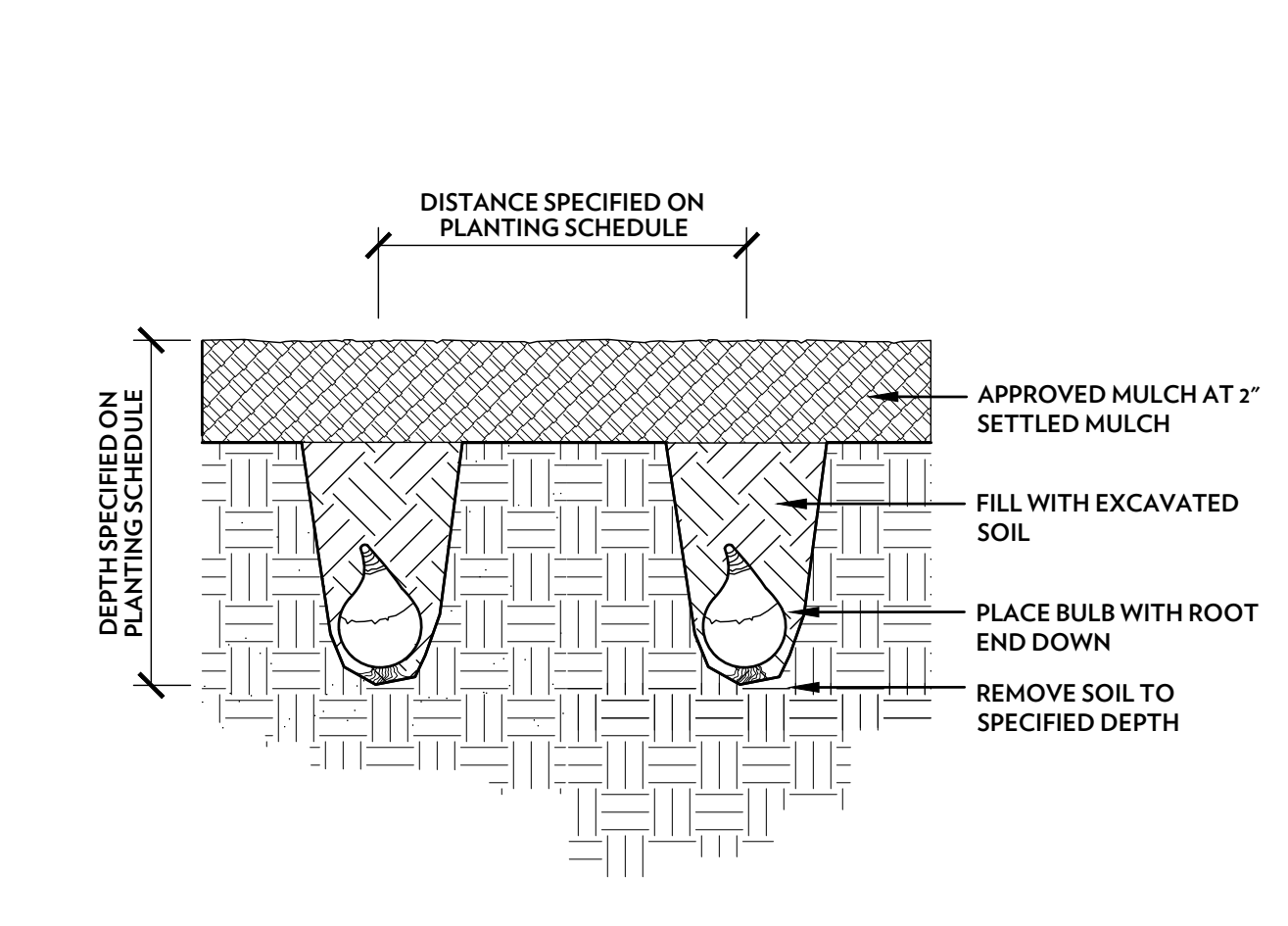
1 DECIDUOUS TREE PLANTING
1/4" = 1'-0"



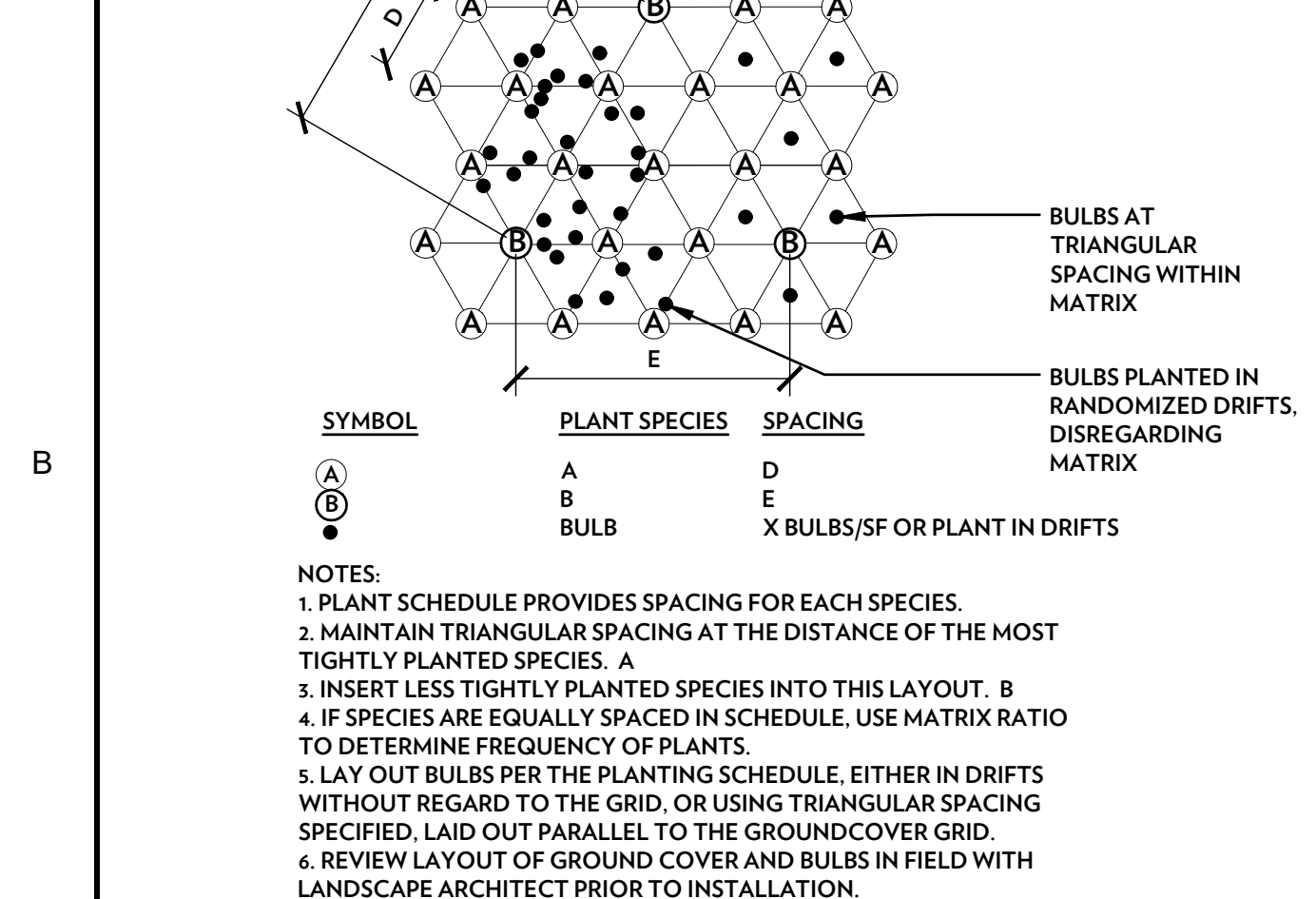
8 PERENNIAL PLANTING
1" = 1'-0"



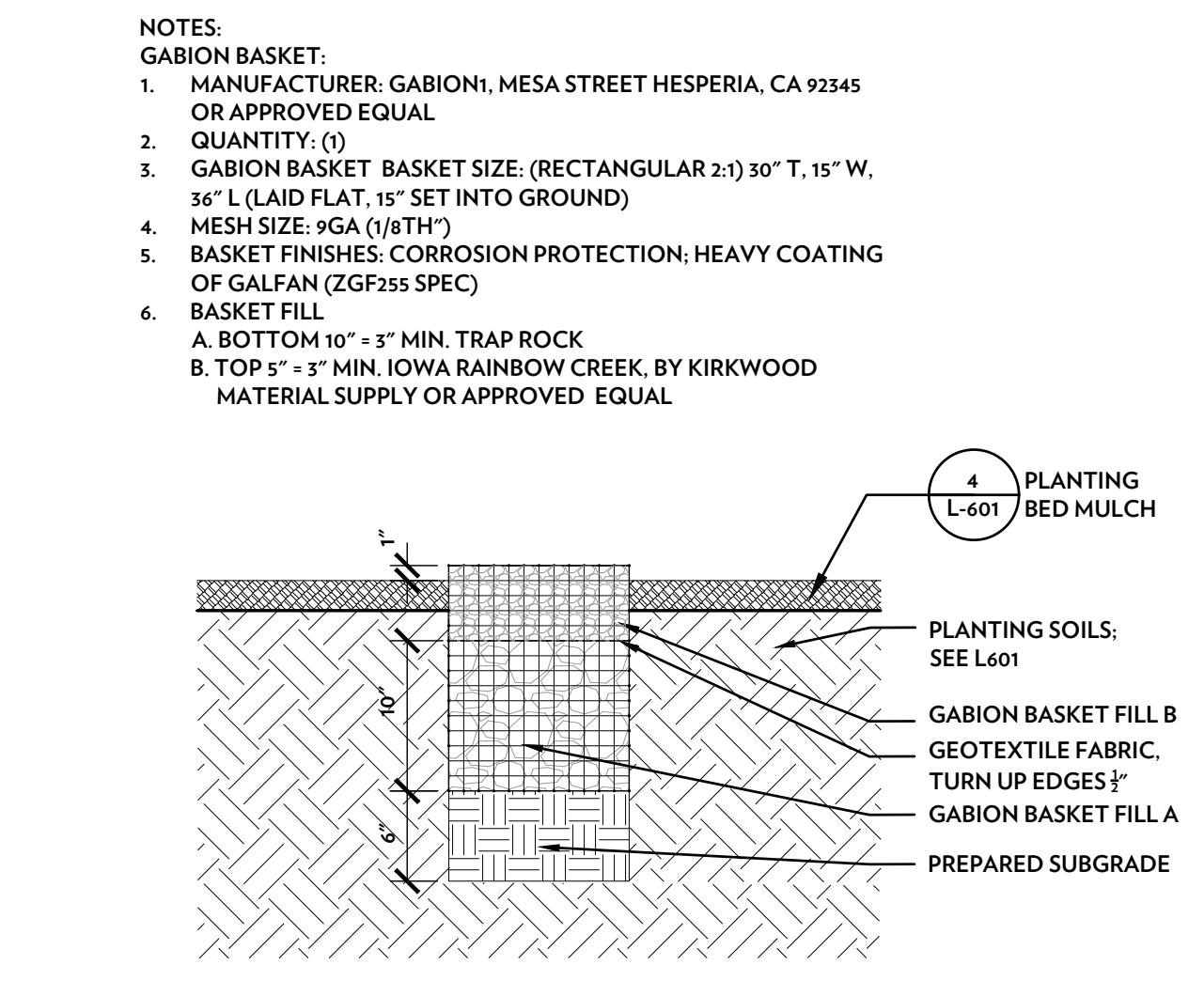
7 GROUND COVER PLANTING
1" = 1'-0"



6 BULB PLANTING
3" = 1'-0"

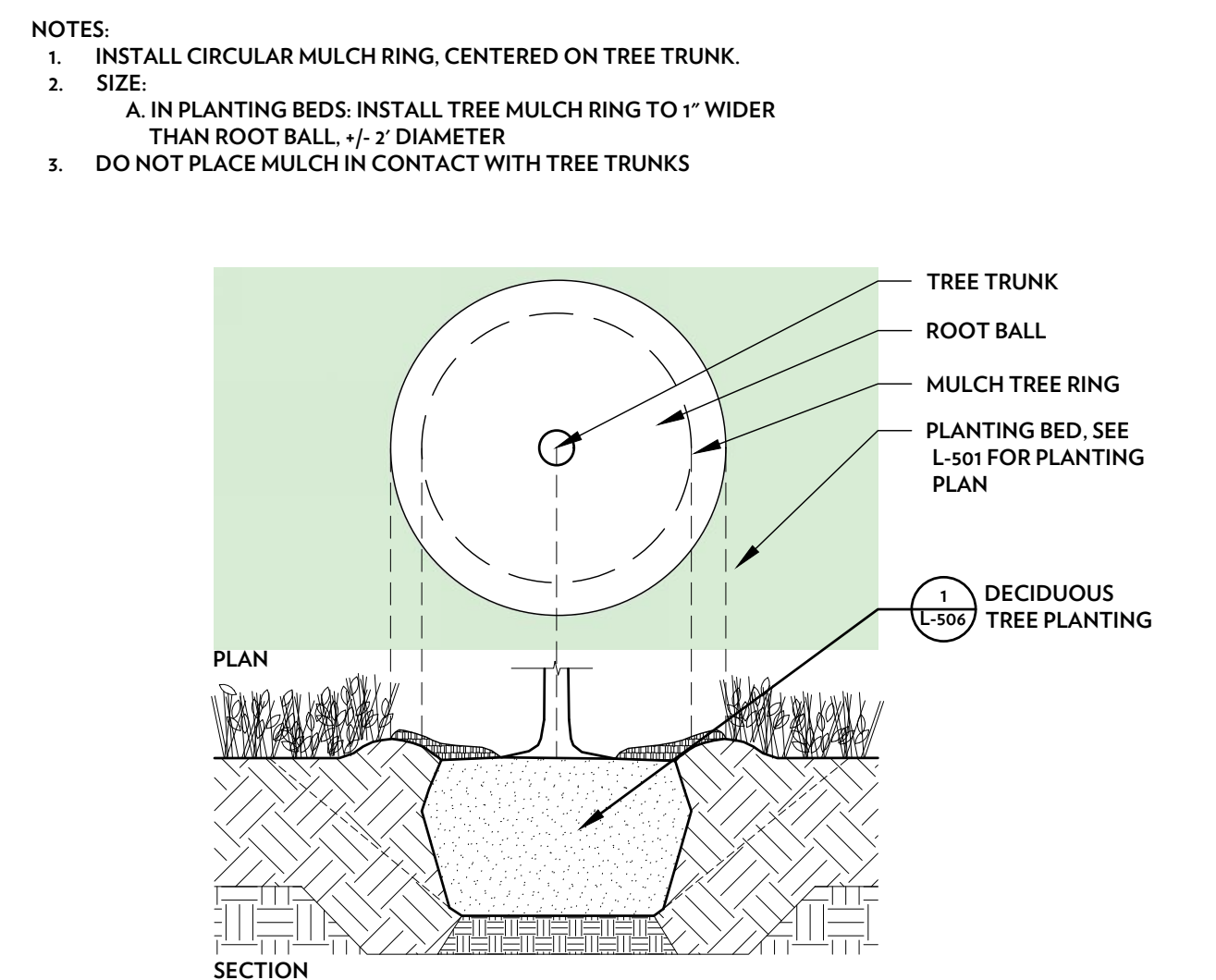


5 GROUND COVER MATRIX PLANTING
NTS

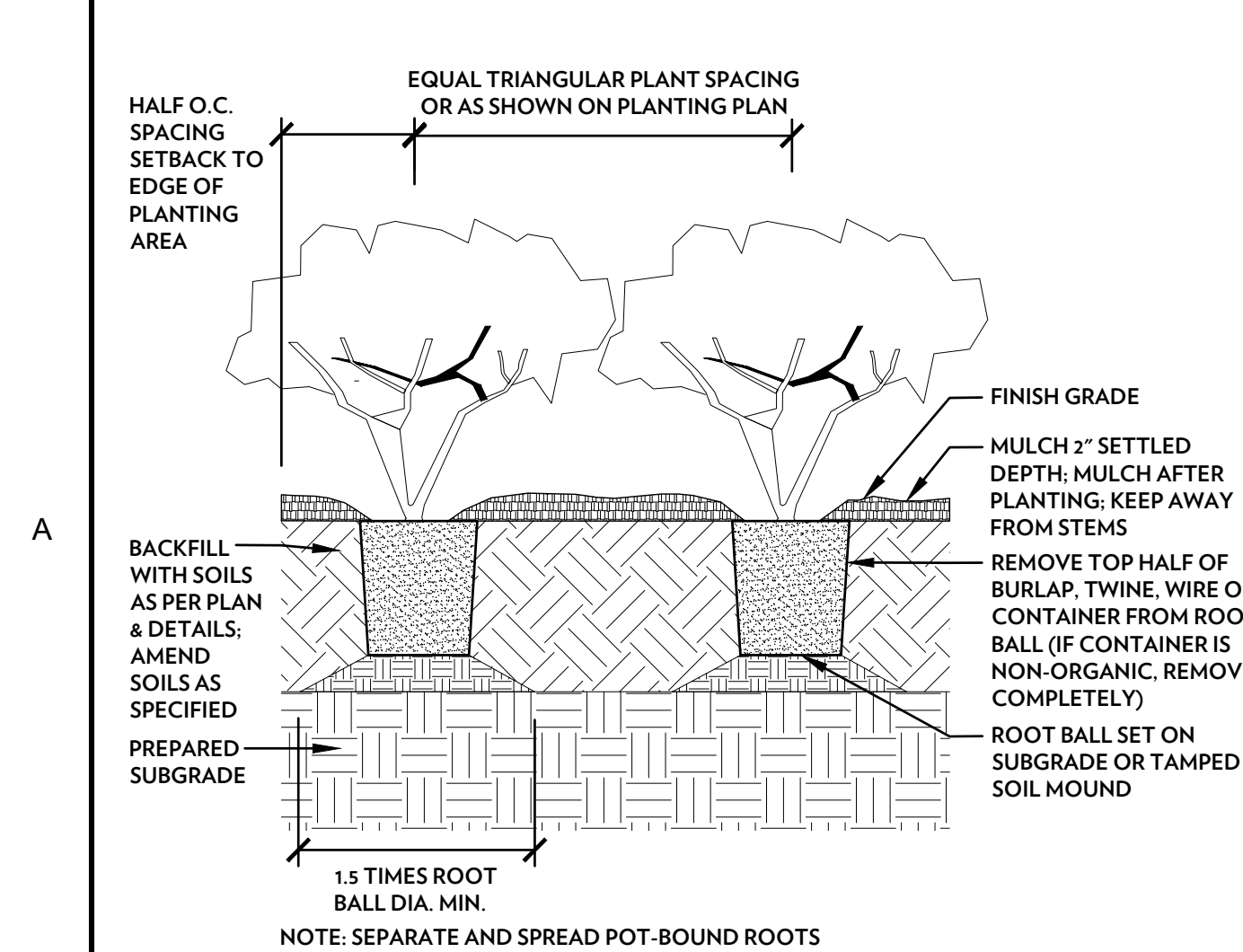


NOTES:
GABION BASKET:
1. MANUFACTURER: GABIONI, MESA STREET HESPERIA, CA 92345 OR APPROVED EQUAL
2. QUANTITY: (1)
3. GABION BASKET BASKET SIZE: (RECTANGULAR 2:1) 30" T, 15" W, 36" L (LAID FLAT, 15" SET INTO GROUND)
4. MESH SIZE: 9GA (1/8TH")
5. BASKET FINISHES: CORROSION PROTECTION, HEAVY COATING OF GALFAN (ZGF255 SPEC)
6. BASKET FILL
A. BOTTOM 10" - 3" MIN. TRAP ROCK
B. TOP 5" - 3" MIN. IOWA RAINBOW CREEK, BY KIRKWOOD MATERIAL SUPPLY OR APPROVED EQUAL

11 GRAVEL PAD
1" = 1'-0"



10 MULCH @ TREES
1/2" = 1'-0"



9 SHRUB PLANTING
1" = 1'-0"

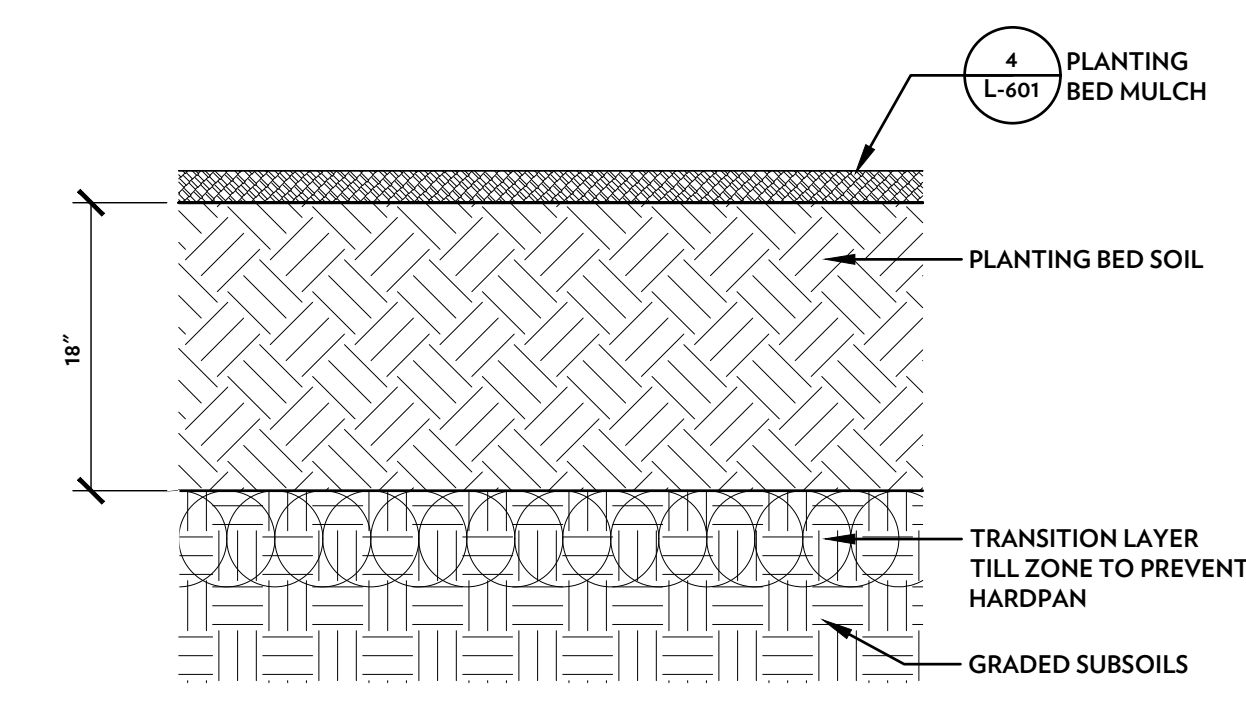
Trivers Associates, Inc. 2023		
PROJECT #:	22066.00	
No.	Description	Date

No.	Description	Date
-----	-------------	------

SOIL LEGEND

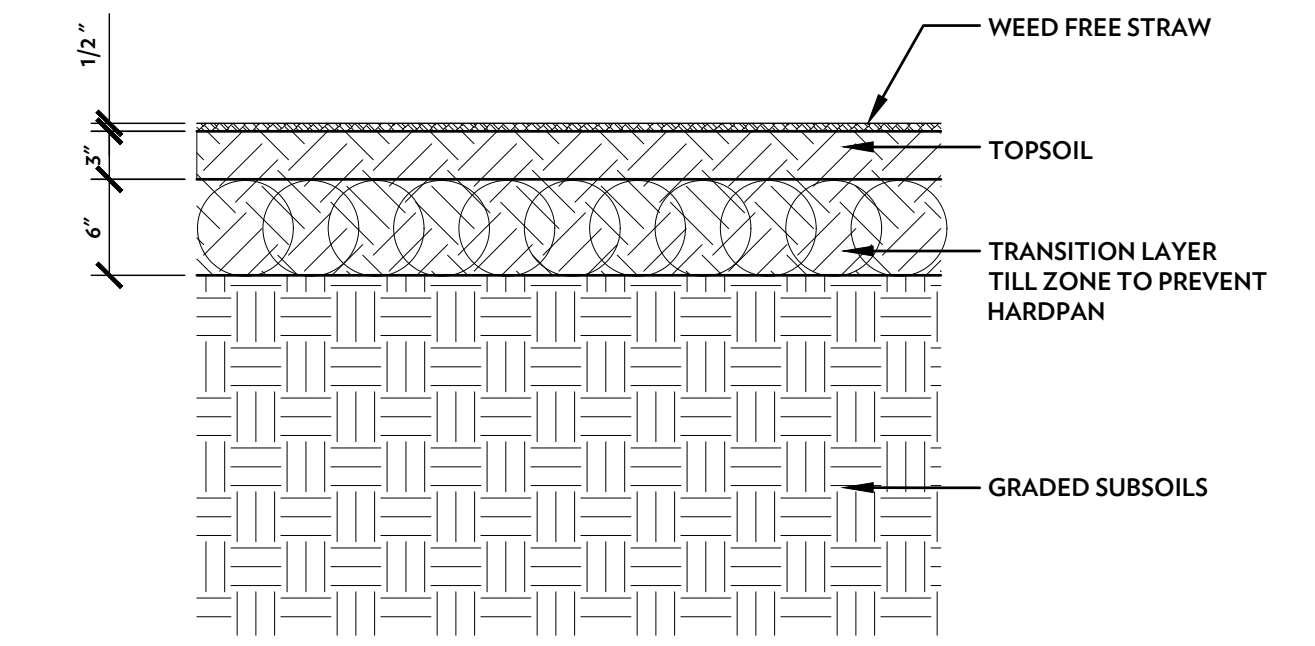
SYMBOL	MATERIAL	DETAIL
	PLANTING BED SOIL	2/L-601
	ZONE 3, PLANTING FILED SOIL- FUTURE PHASE (NOT IN SCOPE)	3/L-601
	TREE PIT	3/L-506

NOTES:
 1. TILL SOIL SUBGRADE (TRANSITION LAYER) TO 6" DEEP BEFORE ADDING ADDITIONAL SOIL OR AMENDMENTS.
 2. INSTALL ANY IMPORTED SOIL LAYERS AT 6" MAX LIFTS TO FINISH GRADE.
 3. SCARIFY SURFACE OF EACH SOIL LAYER & BETWEEN EACH LIFT OF SOIL PLACED.
 4. FOLLOW SOIL AND MULCH NOTES FOR MATERIAL SPECIFICATION.



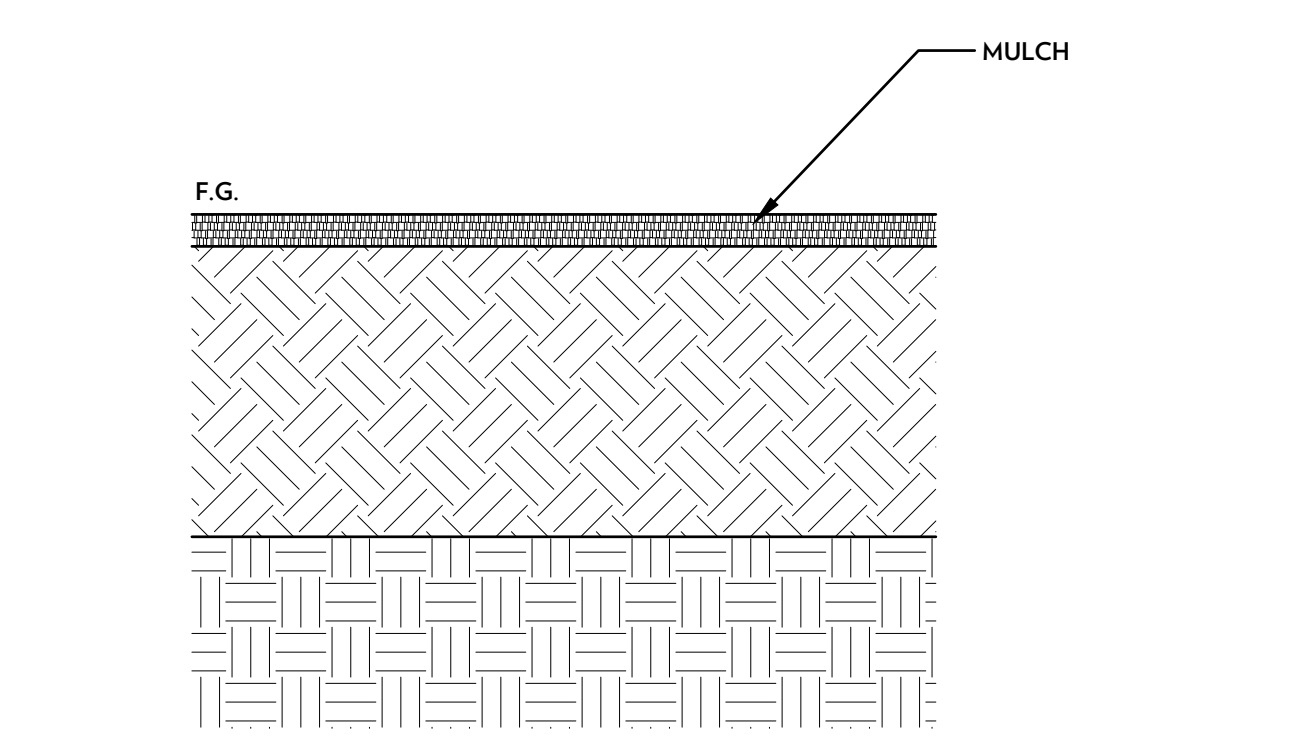
2 PLANTING BED SOIL
 1" = 1'-0"
 0 .5 1 2FT

NOTES:
 1. TILL SOIL SUBGRADE (TRANSITION LAYER) TO 6" DEEP BEFORE ADDING ADDITIONAL SOIL OR AMENDMENTS.
 2. TILL IN 2" LIFTS OF SPECIFIED SOILS INTO EXISTING SOILS AS REQUIRED TO MEET DEPTH. SCARIFY SURFACE OF EACH SOIL LAYER & BETWEEN EACH LIFT OF SOIL PLACED. TILL AFTER ADDITION OF SOIL. SCARIFICATION SHALL BE 1" DEEP BETWEEN LIFTS OF SOIL.
 3. INSTALL ANY IMPORTED SOIL LAYERS AT 6" MAX LIFTS TO FINISH GRADE.
 4. SCARIFY SURFACE OF EACH SOIL LAYER & BETWEEN EACH LIFT OF SOIL PLACED.
 5. SPREAD ANY SPECIFIED SOIL AMENDMENTS OVER ALL AREAS, PER MANUFACTURER'S INSTRUCTIONS, NO MORE THAN 48 HOURS BEFORE PLANT INSTALLATION, & CULTIVATE THOROUGHLY IN AT LEAST 2 DIRECTIONS TO MIX INTO THE SOIL TO A DEPTH OF 4".
 7. SEE NOTES FOR ADDITIONAL INFORMATION.

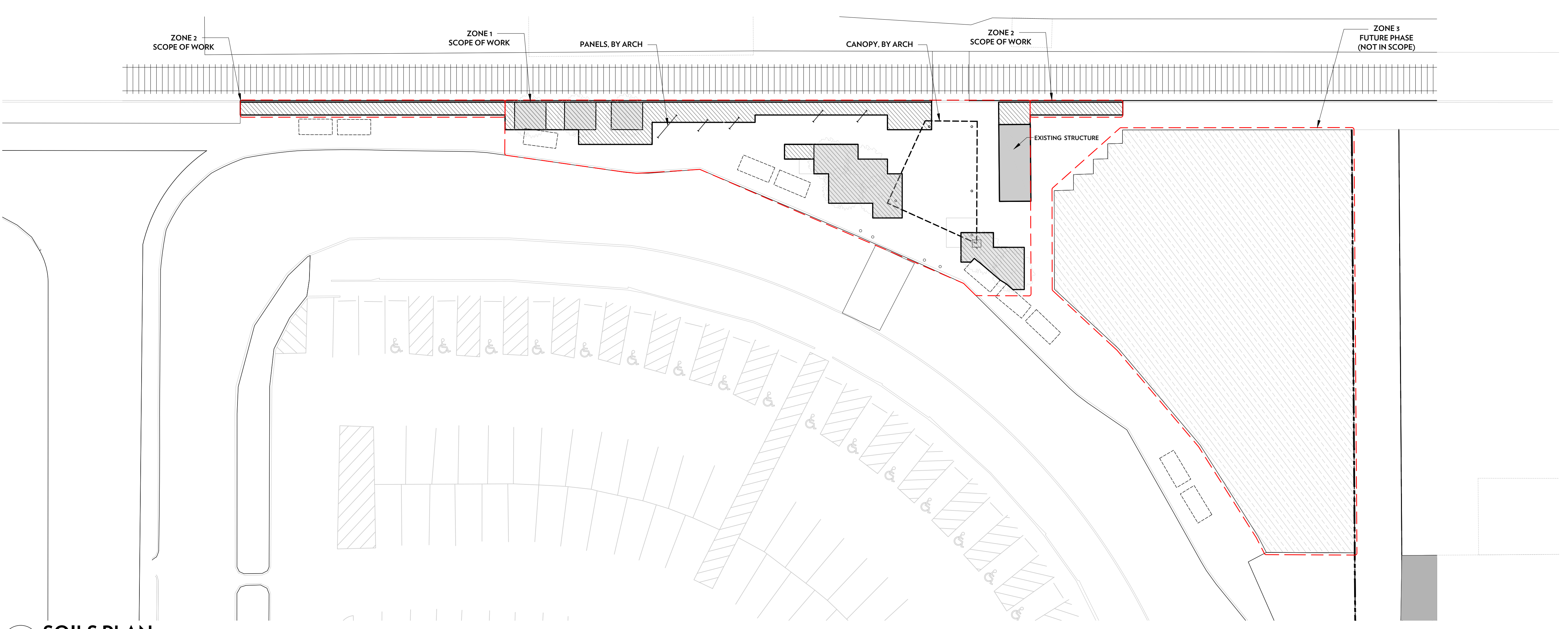


3 ZONE 3, PLANTING FIELD SOIL FUTURE PHASE (NOT IN SCOPE)
 1" = 1'-0"
 0 .5 1 2FT

NOTES:
 1. SEPARATE MULCHED AREAS FROM TURF AREAS WITH A 45-DEGREE, 4"-TO 6"-INCH DEEP, SHOVEL-CUT EDGE UNLESS OTHERWISE INDICATED.
 2. TOP OF SPECIFIED MULCH DEPTH SHOULD NOT EXCEED ADJACENT PAVEMENT FINISH GRADE, TOP OF PLANTER WALL OR TOP OF CURB. HOLD FLUSH TO TOP UNLESS OTHERWISE INDICATED.



4 PLANTING BED MULCH
 1" = 1'-0"
 0 .5 1 2FT



1 SOILS PLAN
 1" = 20'