

System-wide Security Assessment for MetroLink

June 21, 2018



Presented by:



PROJECT OVERVIEW

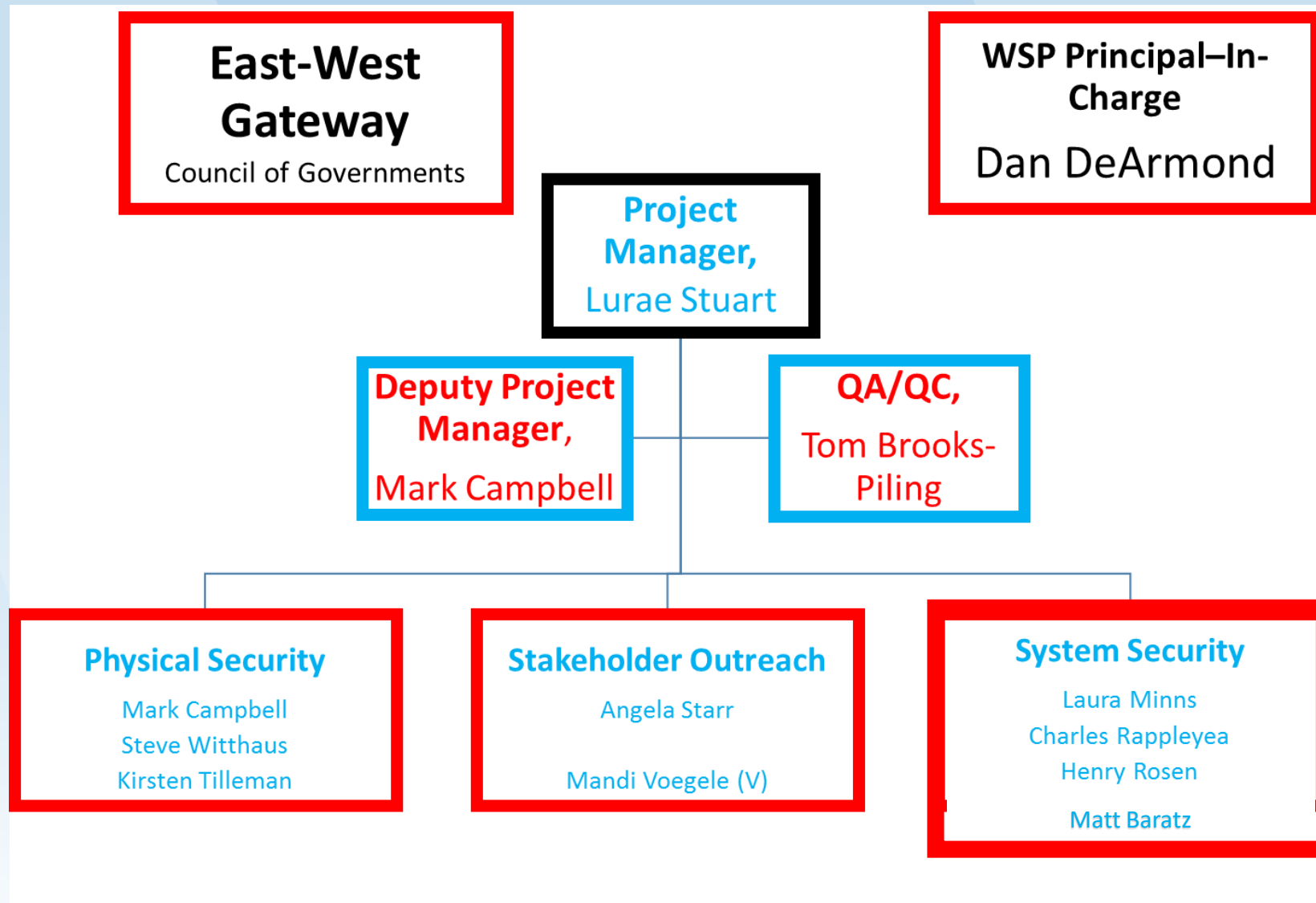
Perform a comprehensive security assessment of the St. Louis MetroLink System, resulting in recommendations to improve the security of the system

MetroLink, the 46-mile long light rail system in St. Louis, Missouri, is owned and operated by Metro Transit under the Bi-State Development Agency. It has been in operation since July 1993 and carries 46,180 passengers daily.

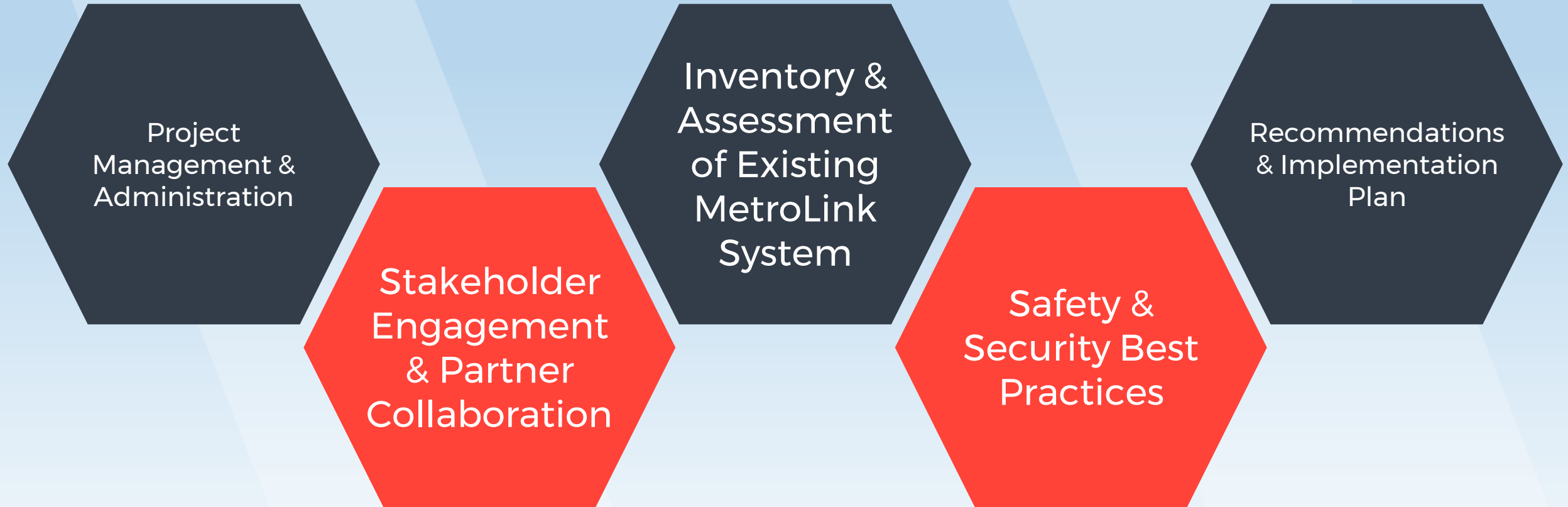
Responding to several violent episodes, the City of St. Louis, St. Clair County, St. Louis County, and Bi-State signed a Memorandum of Understanding outlining a plan to improve MetroLink security in cooperation with law enforcement.

The project's scope has evolved into a comprehensive assessment of the overall security at MetroLink stations and aboard MetroLink trains.

Project Team



CONTRACT TASKS



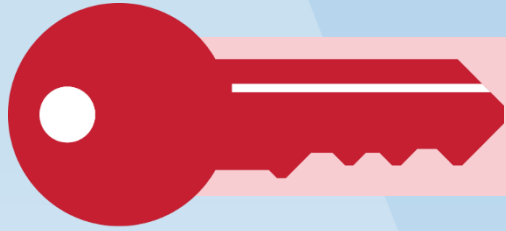
Security Risk Assessment Methodology



Key Terminology

- **Safe** – freedom from **unintentional** harm to people, equipment, reputation
- **Secure** – freedom from **intentional** harm to people, equipment, reputation
- **Hazard** – real or potential condition that can cause injury, illness, death, damage
- **Threat** – any intentional action with the potential to cause harm in the form of death, injury, destruction, disclosure, interruption of operations, or denial of services
- **Vulnerability** – any weakness, flaw or condition that allows and/or can be exploited, for the successful realization of a potential threat against the system and its assets
- **Risk** – likelihood + severity (consequence) of a realized threat
- **Acceptable Risk** – when further risk reduction measures will not result in significant reduction of risk

Risk Acceptance



The key for the Council and Partners is establishing exactly what is meant by acceptable or tolerable risk.

The expression “acceptable risk” usually, but not always, refers to the level at which further risk reduction measures or additional expenditure of resources will not result in significant reduction of risk” – ANSI B1.0 - 2010

Risk acceptance is a policy decision that must be owned & embraced by the system, as a whole, not individuals within the system

Risk acceptance is defined within the Security Risk Management Process

KEY POINT

- ▶ “Accepting” a risk does not mean the risk is eliminated
- ▶ “Residual risk” still remains
- ▶ Remaining risk is sufficiently low to be outweighed by the benefits of the existing operation

Risk-Based Hazard Management

Risk Identification

- Identify Assets
- Determine Threats
- Identify Vulnerabilities

Risk Analysis & Evaluation

- Vulnerability Analysis
- Threat Likelihood Determination
- Security Incident Consequence Analysis
- Determine Risk
- Identify Controls
- Determine Residual Risk

Acceptable Risk

- Yes? Continue
- No? Return to the Identification of additional controls

Project Overview & Approach



WSP Security Assessment Approach



Stakeholder Engagement & Partner Collaboration

Stakeholder Engagement Plan

- Stakeholder contacts
- Engagement database
- Activities to engage stakeholders (surveys, workshops)

Stakeholder Activity Facilitation & Media Messaging

- Facilitation of activities to engage stakeholders
- Taking input and providing feedback about the project
- Developing public-facing messaging and media-relations

Security Risk & CPTED Training

- Customized security risk and CPTED Training to emphasize the risk based approach to system security
- Scheduled for June 28th

Inventory & Assessment of Existing MetroLink System

MetroLink Inventory

- Inventory of current security conditions
- Physical assets, procedures, staffing, relationships

Security Staffing Assessment

- Current state of security staffing
- Effectiveness and efficiency
- Challenges and needs
- Performance measures

Fare System Analysis

- Effectiveness of the fare enforcement program
- Equity of fare enforcement program

Best Practices / Peer Review

- Peer review by transit / rail staff from comparable agencies
- Best practice review

Threat & Vulnerability Assessment

- Acceptable / Tolerable Risk
- As Low As Reasonable Practicable (ALARP) Risk
- Mitigations / Controls

Recommendations & Implementation Plan

Recommendations

- Summary of recommendations to improve security of the system
- Physical enhancements, procedural adjustments, & strategic direction

Implementation Plan

- Plan to implement recommendations
- Order of magnitude cost estimate
- Implementation timeframe

Presentations / Summaries

Stakeholders



Stakeholders

Metro

St. Clair County

St. Louis County

Passengers/
Employees
/ Local
Business

State Partners

Others

City of St. Louis

Citizens for Modern Transit

ATU / SEIU

First Responders (PD/FD)



Questions?



THANK YOU



Lurae Stuart
Project Manager
VP, Transit & Rail Safety/Security
Lurae.stuart@wsp.com

