



Transit Provides Access

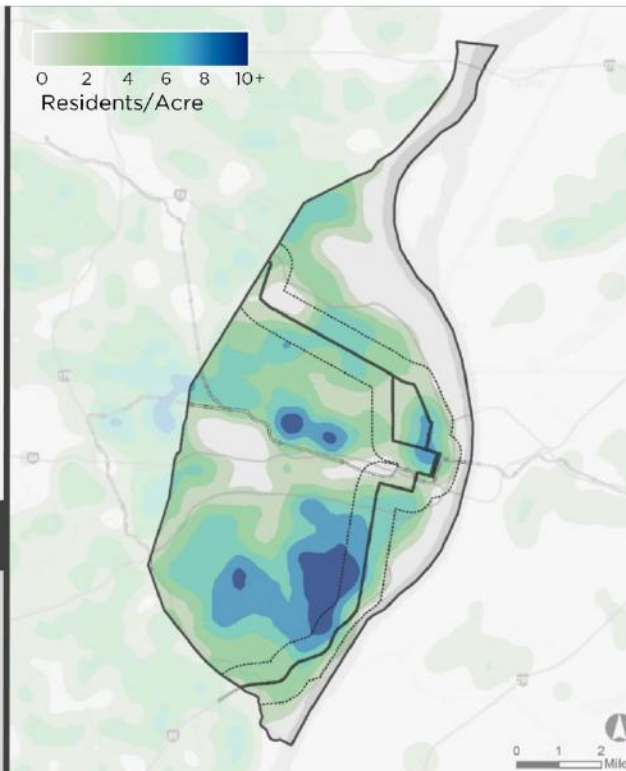
Jobs and Density



Jobs

Increased access to major employment centers:

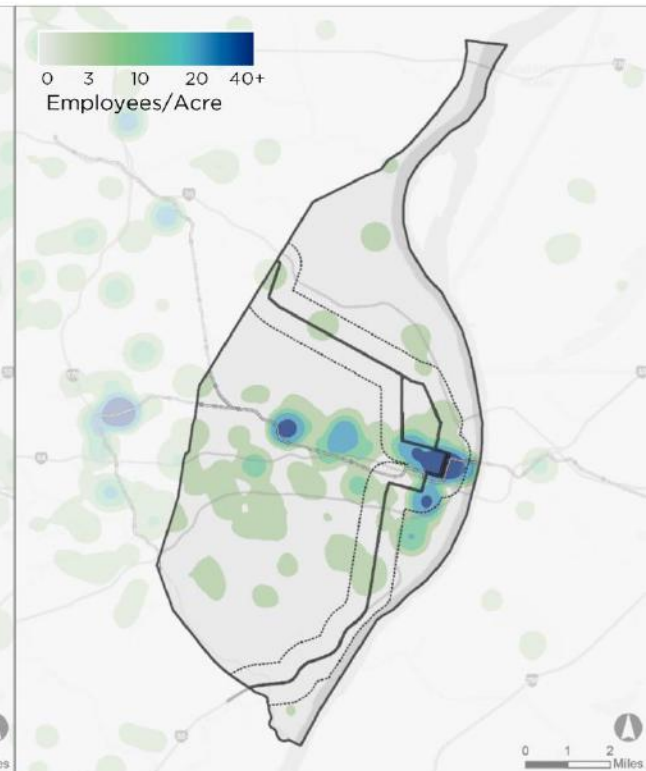
- Downtown | **90K** jobs
- BJC | **27K** jobs
- Cortex | **4K** jobs



Population Density

87,000

more residents in transit shed through expansion



Employment Density

250,000

jobs in existing and proposed transit shed



Transit Provides Access

Poverty and Upward Mobility



Commuting Time

50%

of **low income** people living in cities say access to **public transit** is a **top** or **high priority**



“The **longer** an average commute in a given county, the **worse** the chances of low-income families there moving up the ladder.”

“**Commuting time** has emerged as the **single strongest factor** in the odds of **escaping poverty.**”



Transit Provides Access

Poverty and Upward Mobility

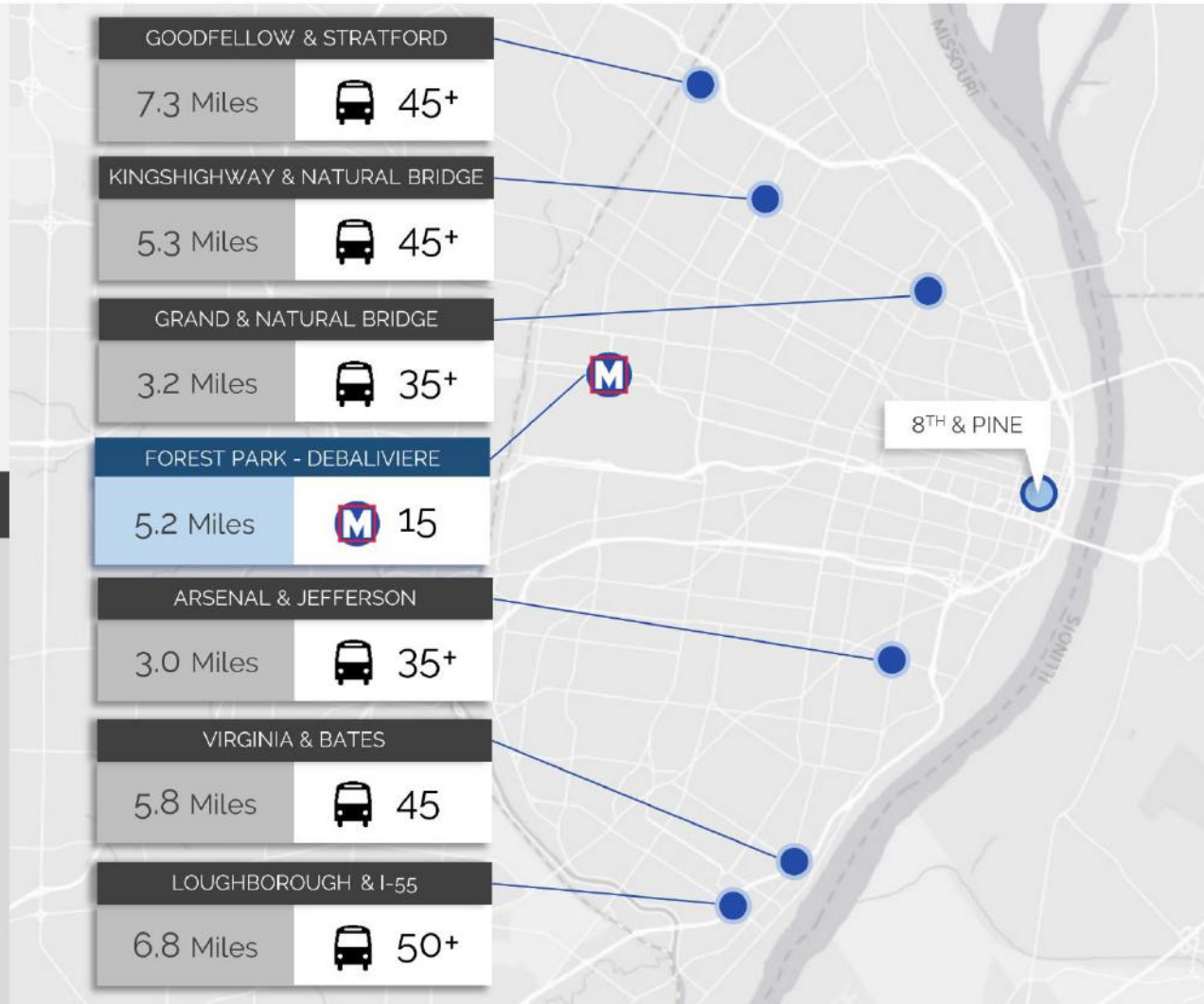


Commuting Time



Bus Time to 8th & Pine
(Downtown) in
minutes:

GOODFELLOW & STRATFORD	7.3 Miles	45+
KINGSHIGHWAY & NATURAL BRIDGE	5.3 Miles	45+
GRAND & NATURAL BRIDGE	3.2 Miles	35+
FOREST PARK - DEBALIVIERE	5.2 Miles	15
ARSENAL & JEFFERSON	3.0 Miles	35+
VIRGINIA & BATES	5.8 Miles	45
LOUGHBOROUGH & I-55	6.8 Miles	50+



8th & PINE





Transit Eases Congestion

Public Transportation Savings



Big Savings

Public Transit saves
St. Louis, each year:

2.9 MILLION hours of delay

2.7 MILLION gallons of fuel

\$74M in congestion costs





Transit Benefits the Environment

A More Sustainable Mode of Transportation



Pollution

Light rail produces

60%

fewer emissions than
automobiles





Transit Attracts Talent

Young Professionals and Cities

PERCENT CHANGE IN POPULATION AGED 25 TO 34 W/ AT LEAST A BACHELOR'S, 2005 - 2015



CITY	CHANGE 25-34 W/ AT LEAST A BACHELOR'S	OVERALL POPULATION CHANGE 25+
St. Louis	87%	1%
Denver	85%	32%
Austin	66%	48%
Columbus	57%	26%
Chicago	51%	7%
Minneapolis	41%	21%
Cincinnati	39%	7%
Cleveland	36%	-1%
Kansas City	23%	7%

Young Professionals

Change 25-34 w/ at least a bachelor's
2005 - 2015

➤ St. Louis City **87%**

➤ St. Louis MSA **23%**



Transit Attracts Talent

Education and Income



Education

Per Capita Income Growth by Educational Attainment
1990-2000

0.8%

Bottom 10
Metros

1.8%

Top 10
Metros





Transit Attracts Talent

St. Louis and Education



Education

49TH

Metro St. Louis' ranking in % college degrees

Metro	% 4-Year Degree	Rank	% College (25-34)	Rank
Madison	43%	7	10%	2
Raleigh	42%	8	9%	10
Austin	41%	9	9%	7
Minneapolis	39%	11	9%	9
Columbus	34%	28	8%	16
Indianapolis	32%	40	7%	26
St. Louis	31%	49	6%	39
Pittsburgh	31%	51	6%	37
Cincinnati	30%	62	6%	52
Cleveland	29%	74	5%	73
Detroit	28%	78	5%	82



Transit Attracts Talent

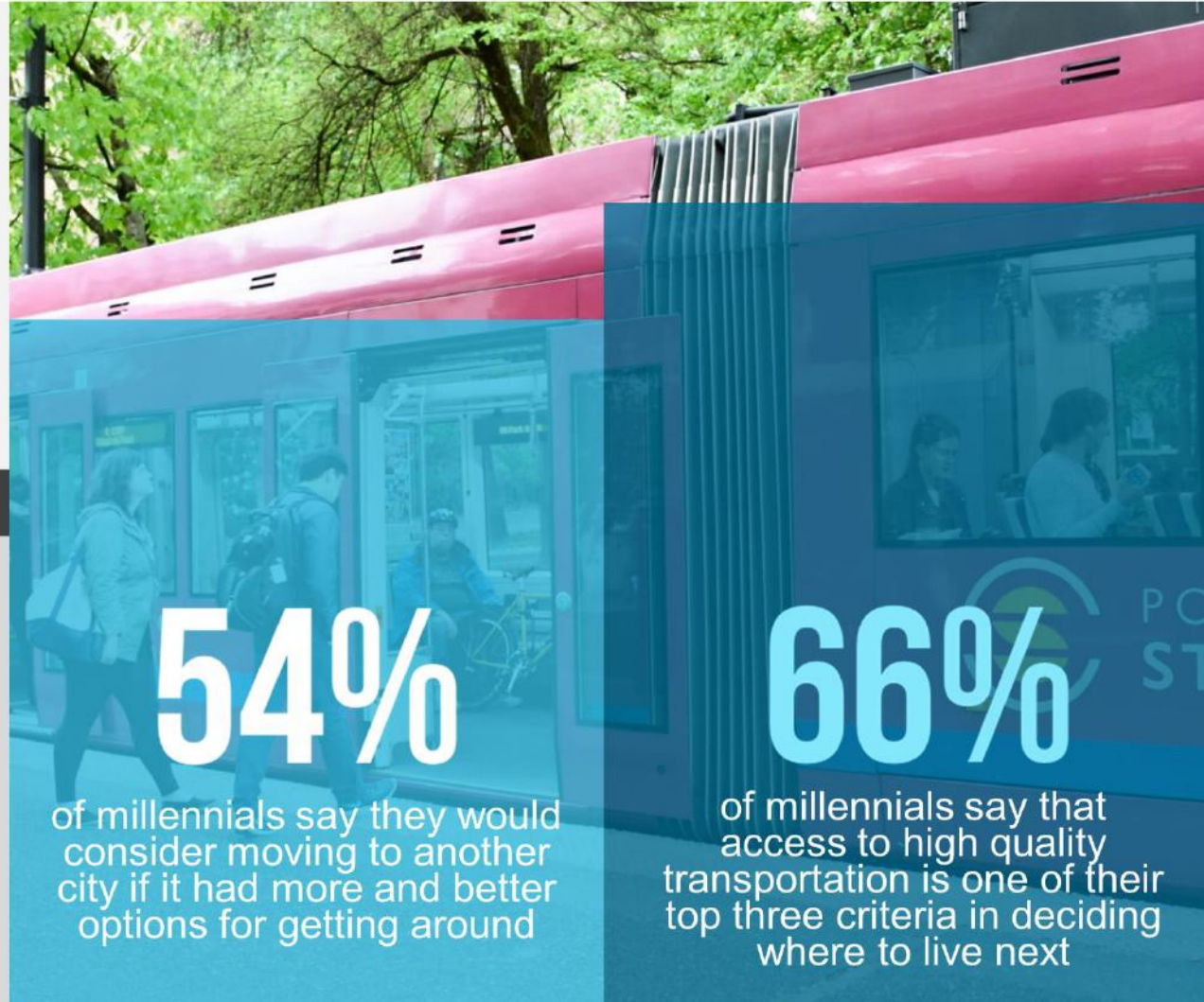
Relocation



Making the Move

39%

of millennials list convenient public transit as a top or high priority



54%

of millennials say they would consider moving to another city if it had more and better options for getting around

66%

of millennials say that access to high quality transportation is one of their top three criteria in deciding where to live next



BENEFITS OF TRANSIT

