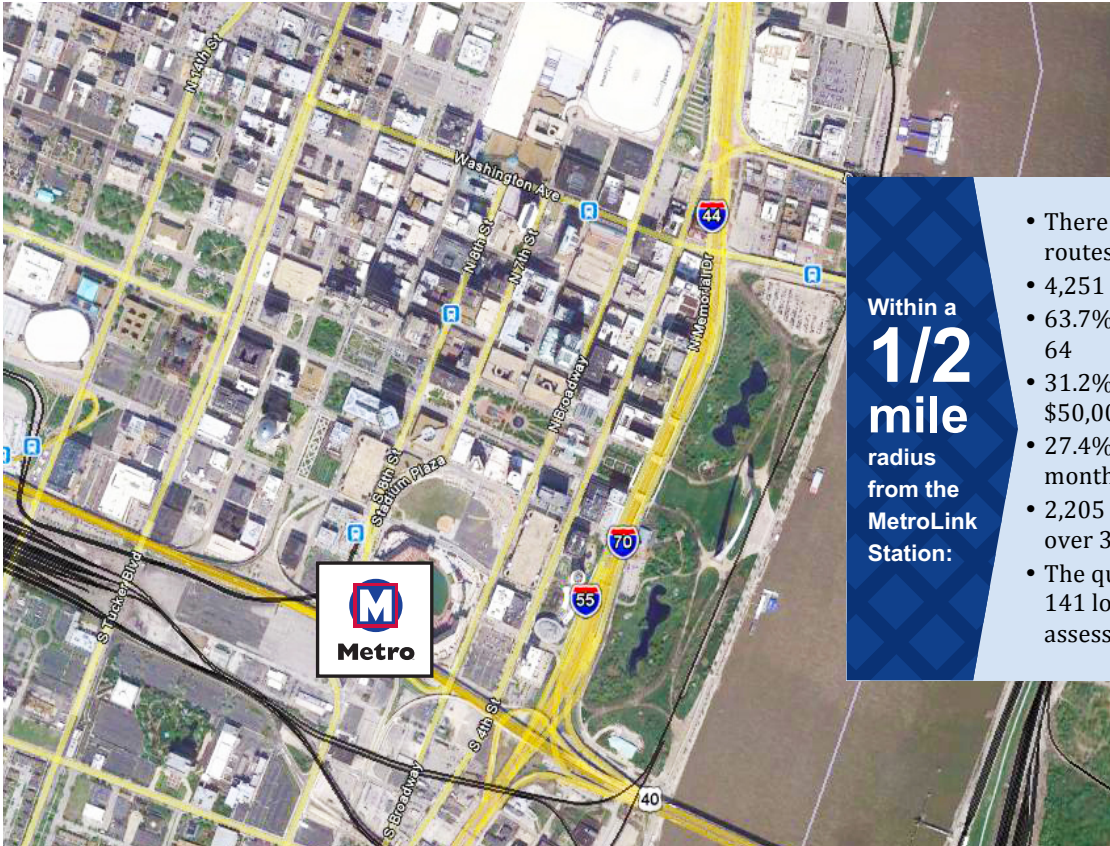




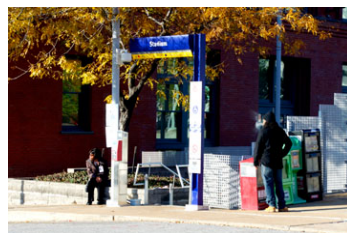
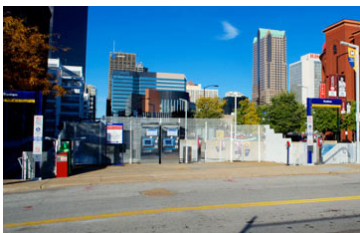
Stadium Station

Work. Play. Everyday. Take Transit to go your way.



Within a **1/2 mile** radius from the MetroLink Station:

- There are no connecting MetroBus routes
- 4,251 population
- 63.7% population between 25 and 64
- 31.2% household income more than \$50,000
- 27.4% rentals priced below \$500 per month
- 2,205 firms and agencies employing over 30,000 people
- The quarter-mile station area covers 141 lots on 32 blocks, with a total assessed value of \$211,361,611.



1290

Daily MetroLink boardings



Parking spaces at the station

0

The Stadium Station is located in the very southern portion of Downtown St. Louis, directly adjacent to Busch Stadium and in close proximity to I-64, the Gateway Mall, and the Riverfront. The area immediately surrounding the Stadium Station is occupied by Busch Stadium, block-long parking garages, and the large empty lot targeted for development under the Ballpark Village plan. Blocks farther west hold the Cupples Station complex, a group of mid-rise 19th century warehouse buildings being redeveloped into a mixed-use and entertainment district. Buildings farther towards Downtown's commercial core and the Riverfront scale

up to 20-40 story towers, many with two- to three-story retail bases. Most of these towers are hotels or office buildings, but one of them contains residential apartments and condominiums. The area south of the Stadium contains a few single-story commercial uses and one four-story apartment building, but is mostly occupied by large surface parking lots.

There is no Park-Ride Lot at this station.

Station is in an area that is eligible for New Markets Tax Credits (NMTCs)



Kimberly M. Cella • Executive Director
314.231.7272 • <mailto:kcella@cmt-stl.org>



John Langa • Vice President Economic Development
314.982.1418 • <mailto:jlanga@metrostlouis.org>