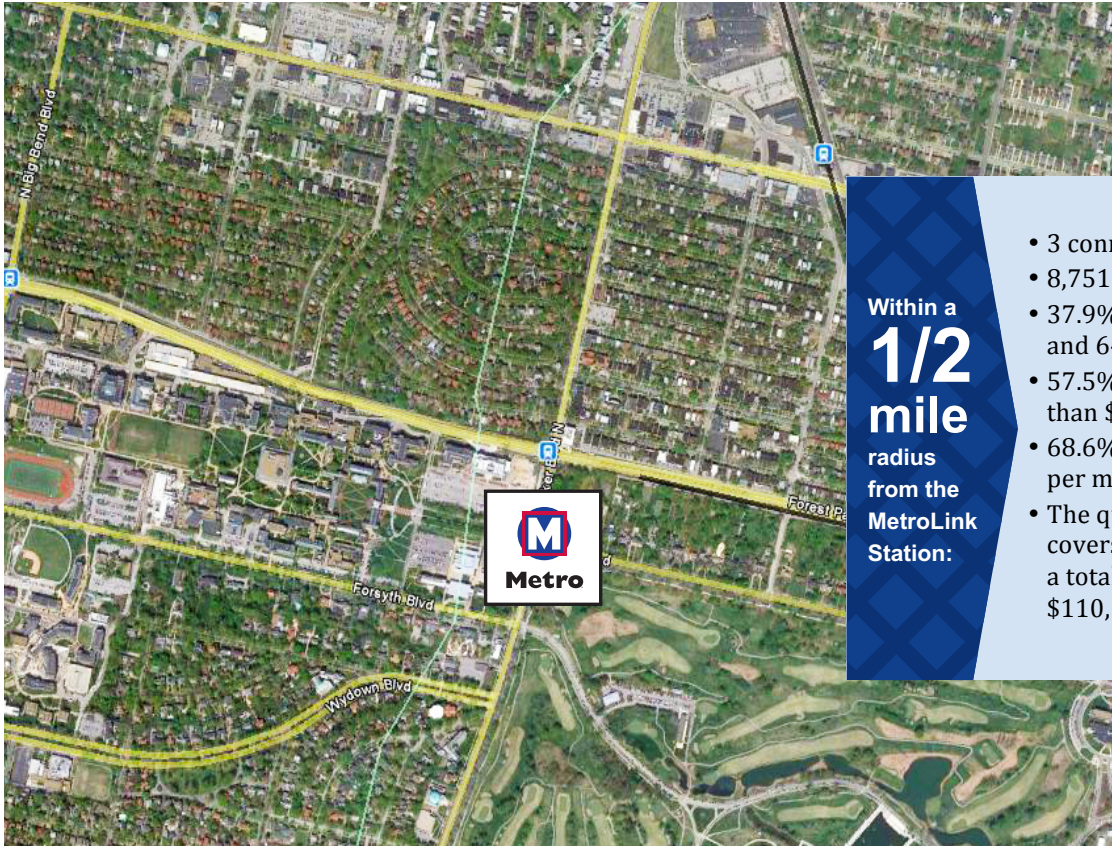




Skinker Station

Work. Play. Everyday. Take Transit to go your way.



Within a **1/2 mile** radius from the MetroLink Station:

- 3 connecting MetroBus route
- 8,751 population
- 37.9% population between 25 and 64
- 57.5% household income more than \$50,000
- 68.6% rentals priced below \$500 per month
- The quarter-mile station area covers 305 lots on 12 blocks, with a total assessed value of \$110,173,720.



700

Daily MetroLink boardings



Parking spaces at the station

0

The Skinker Station provides a gateway to Washington University's main campus and the historic residential neighborhood that surrounds it. The station is located at the border between University City and St. Louis City, and serves a mix of residents, students, University employees, and visitors. One-quarter of the station area is occupied by WUSTL's campus, mostly academic buildings, surface parking lots, and the University's iconic Brookings Hall. East of Skinker Boulevard lies Forest Park and the Catlin Tract Historic District, consisting of two- and three-story single-family homes on one-acre lots. The historic Skinker-DeBaliviere neighborhood lies directly north of Forest Park Parkway, east of Skinker,

and contains both three-story apartment buildings and two- or three-story single-family homes. The Parkview Historic District lies west of Skinker and consists entirely of two- and three-story, pre-War single-family homes. Farther north along Skinker, well outside the quarter-mile station area, is the Delmar Loop mixed-use entertainment district.

There is no Park-Ride Lot at this station.

[Station is in an area that is eligible for New Markets Tax Credits \(NMTCs\)](#)



Kimberly M. Cella • Executive Director
314.231.7272 • <mailto:kcella@cmt-stl.org>



John Langa • Vice President Economic Development
314.982.1418 • <mailto:jlanga@metrostlouis.org>