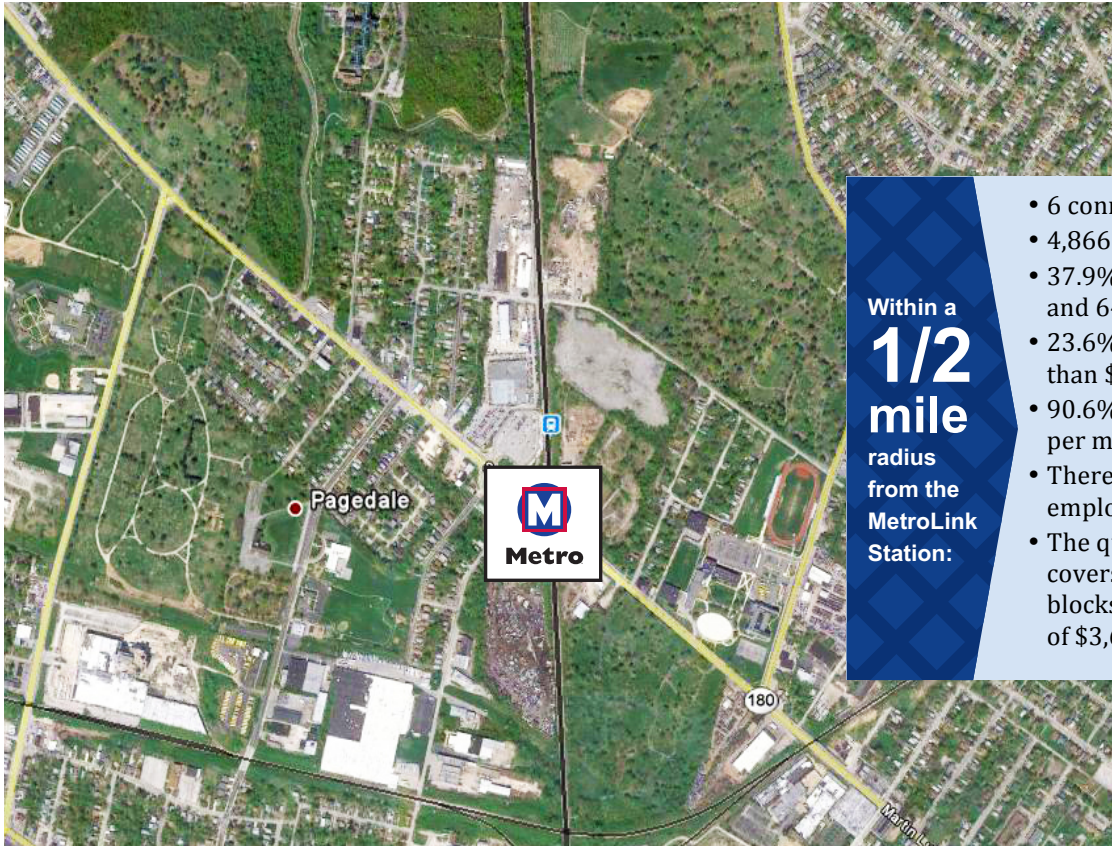




# Rock Road Station

Work. Play. Everyday. Take Transit to go your way.



Within a **1/2 mile** radius from the MetroLink Station:

- 6 connecting MetroBus routes
- 4,866 population
- 37.9% population between 25 and 64
- 23.6% household income more than \$50,000
- 90.6% rentals priced below \$500 per month
- There are 68 firms and agencies employing 620 people.
- The quarter-mile station area covers almost 300 lots on 18 blocks, with a total assessed value of \$3,620,180.



**1620**

Daily MetroLink boardings



Parking spaces at the station

**191**

The Rock Road Station is located on St. Charles Rock Road, one of the region’s major commercial corridors. Most of the land around the MetroLink Station itself is developed with industrial and commercial uses, though there are also several large vacant parcels in the immediate vicinity. Residential neighborhoods of single-family homes are located about a block away from the station on all sides. The quarter-mile station area also benefits from the presence of considerable open space and community facilities, including St. Peters Cemetery, Normandy High School, Bethany Cemetery, and the Pagedale Family Support Center.

There are several large vacant parcels, as well as several apparently vacant industrial sites.

*Metro’s three-acre Park-Ride Lot adjacent to the MetroLink Station contains 191 spaces.*

**Ground Lease or Air Rights opportunities available.**

**Station is in an area that is eligible for New Markets Tax Credits (NMTCs)**



**Kimberly M. Cella** • Executive Director  
314.231.7272 • <mailto:kcella@cmt-stl.org>



**John Langa** • Vice President Economic Development  
314.982.1418 • <mailto:jrlanga@metrostlouis.org>