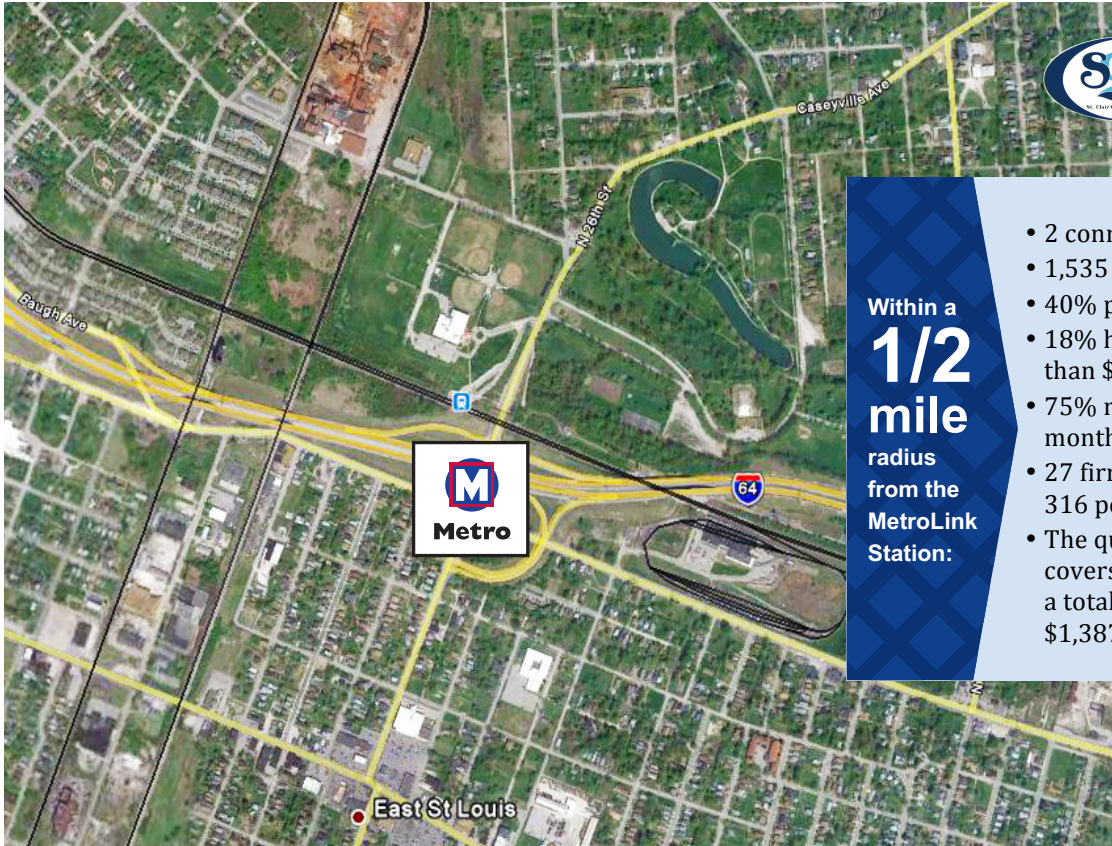




Jackie Joyner-Kersey Center Station

Work. Play. Everyday. Take Transit to go your way.



Within a **1/2 mile** radius from the MetroLink Station:

- 2 connecting MetroBus routes
- 1,535 population
- 40% population between 25-64
- 18% household income make more than \$50,000
- 75% rentals priced below \$500 per month
- 27 firms and agencies employing 316 people
- The quarter-mile station area covers 178 lots on 20 blocks, with a total assessed value of \$1,387,092.



480

Daily MetroLink boardings



Parking spaces at the station

0

The JJK Center Station provides a transit connection to an important community facility in East St. Louis. The Jackie Joyner-Kersey Center provides numerous vital services to the City's youth and residents of the surrounding neighborhood. The JJK Center and MetroLink Station are located near the intersection of I-64 and North 25th Street, a commercial corridor running north-south through the station area. St. Clair Avenue, a major regional commercial corridor, lies just south of I-64. Most of the quarter-mile station area is occupied by the JJK Center, Jones-Hall Park, large vacant lots, and the I-64 right-of-way. A residential neighborhood of one- and two-story single-family homes is located south of St. Clair Avenue. That neighborhood is served by a commercial node at the intersection of St. Clair Avenue and North 25th Street.

There is a substantial amount of vacant land within the quarter-mile station area. There are four large lots or concentrations of vacant lots totaling 45 acres. These lots may offer considerable opportunity for new development. However, some of this unoccupied land is excess property along the MetroLink right-of-way, and some of it is part of Jones-Hall Park.

[Station is in an area that is eligible for New Markets Tax Credits \(NMTCs\)](#)



Kimberly M. Cella • Executive Director
314.231.7272 • <mailto:kcella@cmt-stl.org>



John Langa • Vice President Economic Development
314.982.1418 • <mailto:jrlanga@metrostlouis.org>