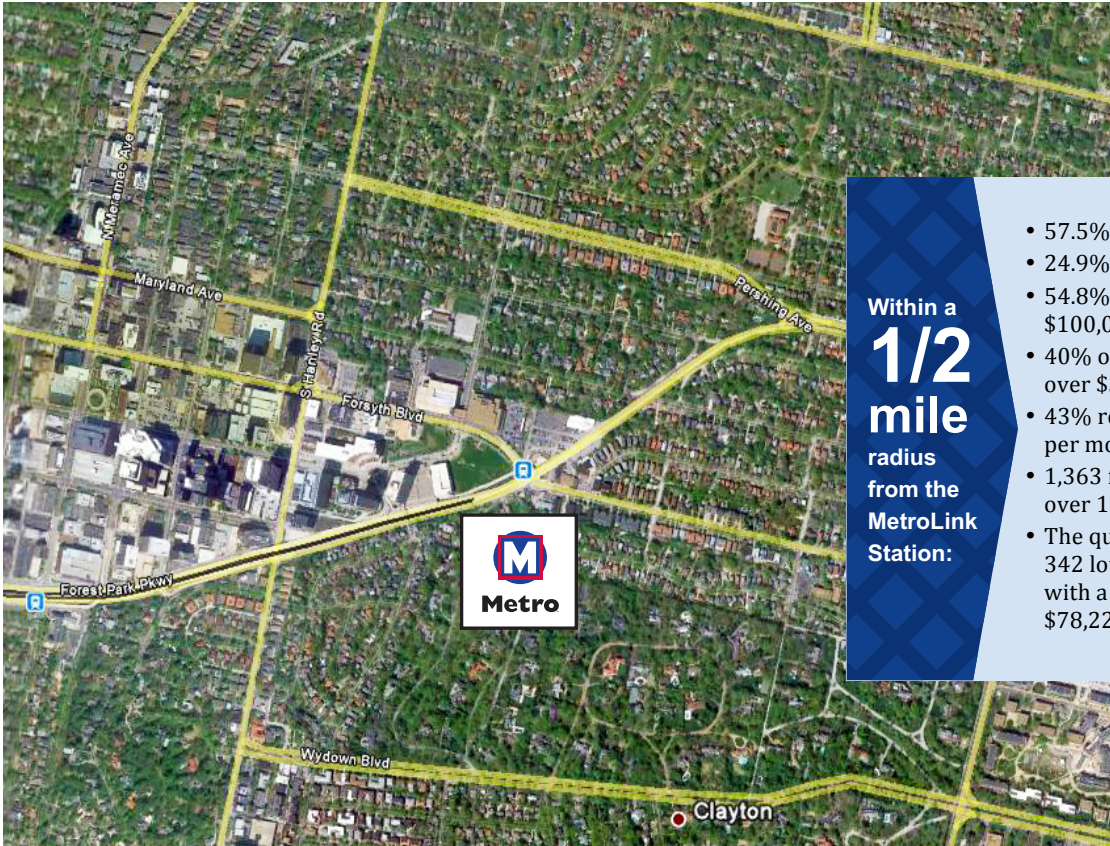




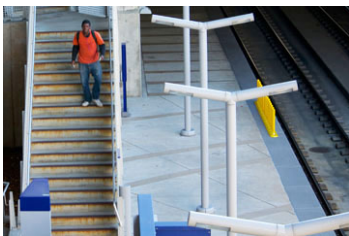
Forsyth Station

Work. Play. Everyday. Take Transit to go your way.



Within a **1/2 mile** radius from the MetroLink Station:

- 57.5% of the population between 25-64
- 24.9% of the population between 0-17
- 54.8% household income more than \$100,000
- 40% owner-occupied units are valued over \$500,000
- 43% rentals between \$1,000 - \$1,499 per month
- 1,363 firms and agencies employing over 11,000 people
- The quarter-mile station area covers 342 lots on approximately 20 blocks, with a total assessed value of \$78,225,540.



390

Daily MetroLink boardings



Parking spaces at the station

0

The Forsyth Station serves the more residential and mixed-use parts of Downtown Clayton, as well as a portion of University City. Forsyth Boulevard and Forest Park Parkway both run east-west through the station area. This section of Forsyth is a very mixed-use corridor containing two- and three-story apartments and mixed-use buildings; single-story commercial strips; small offices; a Washington University satellite campus; and The Plaza in Clayton complex, which includes a 31-story residential tower, an 18-story hotel, an eight-story mixed-use building, and a four-story parking garage. The area immediately surrounding the MetroLink Station includes a large surface parking lot, one- and two-story commercial buildings, and a very large vacant lot between the station and the Plaza

complex. The remainder of the station area covers residential neighborhoods developed with two-story single-family homes.

The station area is split between two jurisdictions, the Cities of Clayton and University City. There is a four-acre vacant lot directly across Forsyth Boulevard from the Forsyth Station between it and The Plaza in Clayton complex. That lot should represent considerable potential for new transit-oriented development.

There is no park-ride lot at this station.



Kimberly M. Cella • Executive Director
314.231.7272 • <mailto:kcella@cmt-stl.org>



John Langa • Vice President Economic Development
314.982.1418 • <mailto:jlanga@metrost.louis.org>