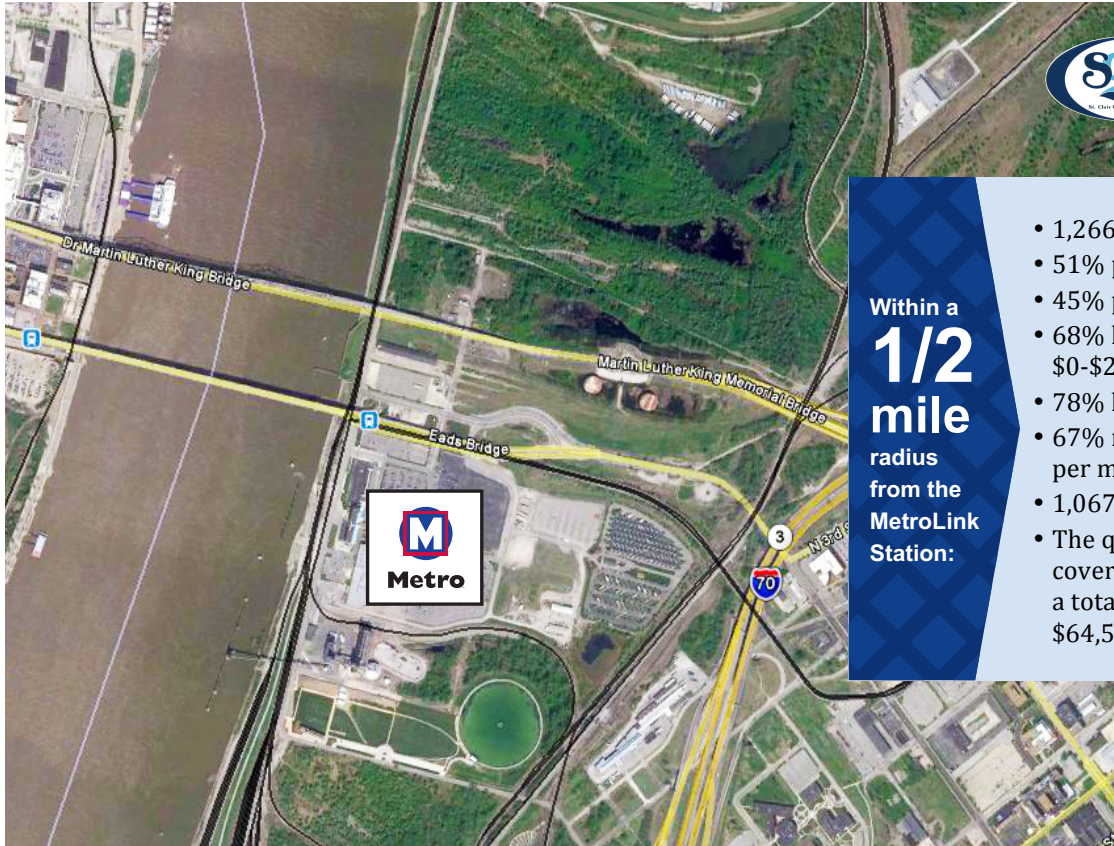




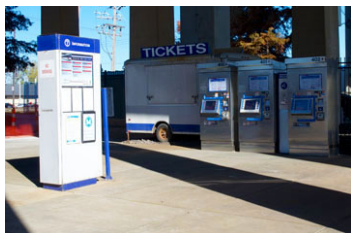
East Riverfront Station

Work. Play. Everyday. Take Transit to go your way.



Within a
1/2
mile
radius
from the
MetroLink
Station:

- 1,266 population
- 51% population between 0-17
- 45% population between 18-64
- 68% household income between \$0-\$25,000
- 78% housing renter occupied
- 67% rentals between \$100-\$500 per month
- 1,067 daily employment
- The quarter-mile station area covers 52 lots on 14 blocks, with a total assessed value of \$64,502,131.



766

Daily MetroLink boardings



Parking spaces at the station

295

The East Riverfront Station is the MetroLink System's gateway to St. Clair County and several Metro East communities. It sits on the riverfront of East St. Louis and has long been a working commercial and industrial district.

There is a considerable amount of vacant land within the station area, north of the MetroLink rail line, totaling approximately 30 acres. The Casino Queen owns a parking lot containing 295 spaces just south

of the station, and allows MetroLink riders to use it as a Park-Ride Lot. The Casino Queen complex is also surrounded by a number of large surface parking lots which may offer some opportunity for development near the station area.

Station is in an area that is eligible for New Markets Tax Credits (NMTCs)



Kimberly M. Cella • Executive Director
314.231.7272 • <mailto:kcella@cmt-stl.org>



John Langa • Vice President Economic Development
314.982.1418 • <mailto:jlanga@metrost.louis.org>