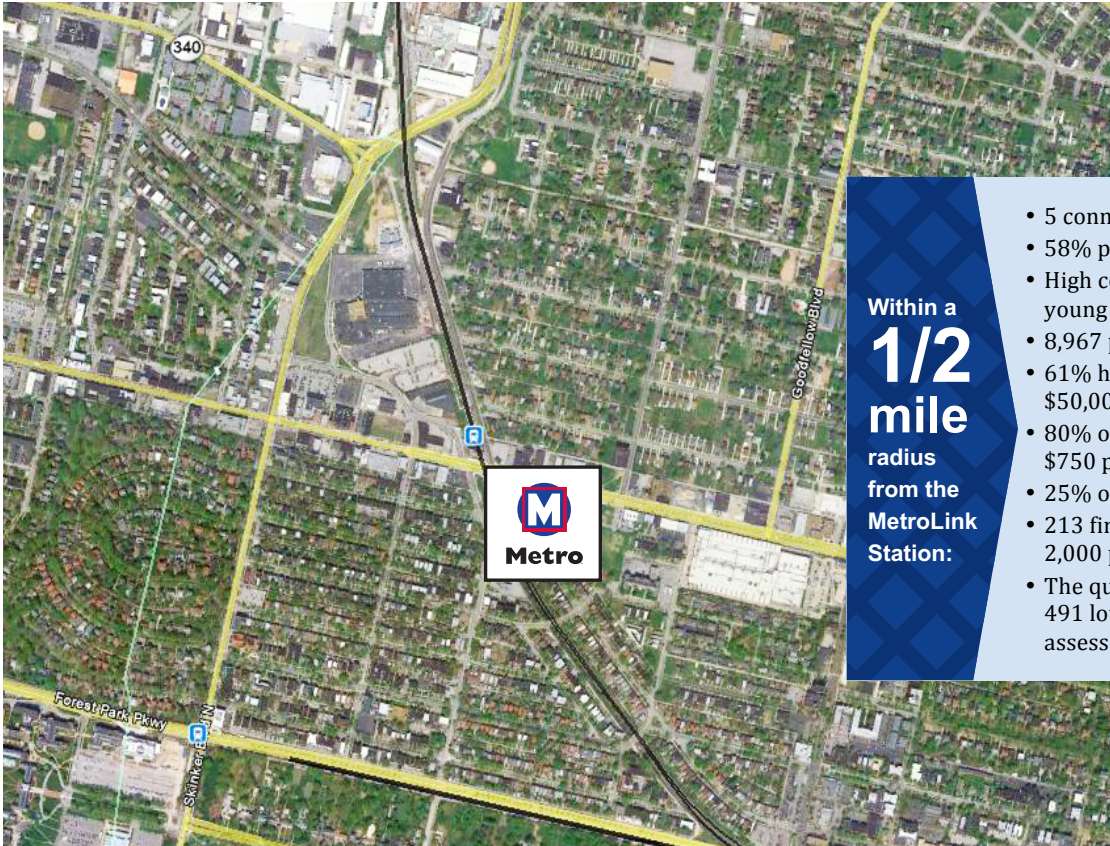




Delmar Loop Station

Work. Play. Everyday. Take Transit to go your way.



Within a **1/2 mile** radius from the MetroLink Station:

- 5 connecting MetroBus routes
- 58% population between 25-64
- High concentration of college-age young adults
- 8,967 population
- 61% household income less than \$50,000
- 80% of rental units are priced below \$750 per month
- 25% of households don't own a car
- 213 firms and agencies employing over 2,000 people
- The quarter-mile station area covers 491 lots on 16 blocks, with a total assessed value of \$17,387,910.



1940

Daily MetroLink boardings



Parking spaces at the station

362

The Delmar Station serves one of the region's most iconic and vibrant neighborhoods, The Delmar Loop mixed-use and entertainment district. The Delmar Loop west of Skinker Boulevard has been a revitalized "lifestyle" district and a regional attraction for over two decades, and was designated one of America's "Great Streets" by the American Planning Association. Over the past ten years, that activity has spread to Delmar east of Skinker, in the City of St. Louis, and the East Loop District now contains a seven-story hotel, a large concert venue, and several blocks of two-story office/retail buildings. The area south of Delmar Boulevard is part of the historic Skinker-DeBaliviere neighborhood, and contains a mix of two- and three-story apartment buildings and single-family homes. The area north of Delmar and east of the MetroLink rail line is another residential neighborhood with a similar development pattern, though those homes tend to be on wider lots and show more signs of disrepair than those south of Delmar. The remainder of the station area, north of Delmar and west of the MetroLink rail line, is occupied by large industrial uses and Washington University's North Campus, as well as several large surface parking lots.

The Loop Trolley Transportation Development District (TDD) has received federal funds to build and operate a modern streetcar line connecting the Delmar Loop to the cultural institutions in Forest Park. If built, the trolley will operate along the entire length of Delmar Boulevard and DeBaliviere Avenue between Trinity Avenue and Forest Park, connecting a vibrant commercial district to one with great potential and perhaps catalyzing new development along the route. The Loop Trolley will also improve the neighborhood's standing as a transit hub by offering connections to two MetroLink stations, a local streetcar, and five bus routes.

Metro owns and operates a 3.5-acre Park-Ride Lot near the MetroLink Station, containing 362 spaces.

Ground Lease or Air Rights opportunities available.

[Station is in an area that is eligible for New Markets Tax Credits \(NMTCs\)](#)



Kimberly M. Cella • Executive Director
314.231.7272 • <mailto:kcella@cmt-stl.org>



John Langa • Vice President Economic Development
314.982.1418 • <mailto:jrlanga@metrost.louis.org>