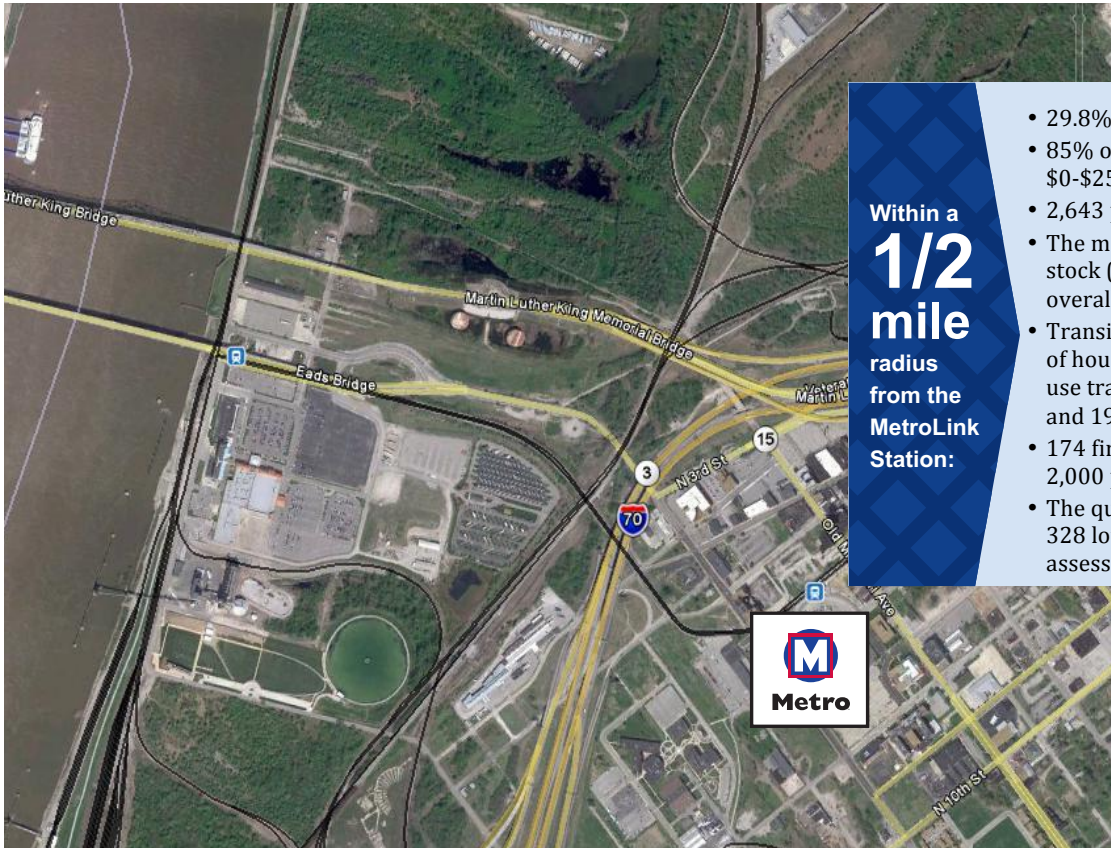




# 5<sup>th</sup> & Missouri Station

Work. Play. Everyday. Take Transit to go your way.



Within a **1/2 mile** radius from the MetroLink Station:

- 29.8% of the population between 25-64
- 85% of household income between \$0-\$25,000
- 2,643 population
- The majority of the occupied housing stock (92%) is rental units, and the overall vacancy rate is 14.5%.
- Transit-supportive neighborhood, half of households don't own a car, 27.4% use transit for their daily commute and 19% carpool.
- 174 firms and agencies employing over 2,000 people
- The quarter-mile station area covers 328 lots on 20 blocks, with a total assessed value of \$10,139,905.



**1840**

Daily MetroLink boardings



Parking spaces at the station

**328**

The MetroLink Station at North 5<sup>th</sup> Street and Missouri Avenue serves the City of East St. Louis' central business district. Downtown East St. Louis was a thriving commercial and industrial hub for much of the late 19<sup>th</sup> and early 20<sup>th</sup> century, and still contains an impressive collection of Art Deco office towers, public architecture, and solid industrial buildings. The 5<sup>th</sup> & Missouri Station is located in the heart of East St. Louis' central business district. North Main Street and Collinsville Avenue are generally occupied by government buildings and office buildings ranging from two to six stories, most with ground-floor retail space. Many of these buildings are vacant and showing signs of disrepair. Much of the land south of the MetroLink Station is occupied by surface parking lots, though the blocks around North 8<sup>th</sup> Street host a number of three- to

four-story government offices and the Kenneth Hall Regional Hospital, as well as supportive single-story retail and service outlets. The eastern and western portions of the station area are primarily occupied by large, single-story industrial uses, surface parking lots, and vacant lots.

*Metro owns almost nine acres of land within the quarter-mile station area, including a Park-Ride Lot containing 328 spaces.*

**Ground Lease or Air Rights opportunities available.**

**[Station is in an area that is eligible for New Markets Tax Credits \(NMTCs\)](#)**



**Kimberly M. Cella** • Executive Director  
314.231.7272 • <mailto:kcella@cmt-stl.org>



**John Langa** • Vice President Economic Development  
314.982.1418 • <mailto:jrlanga@metrost.louis.org>