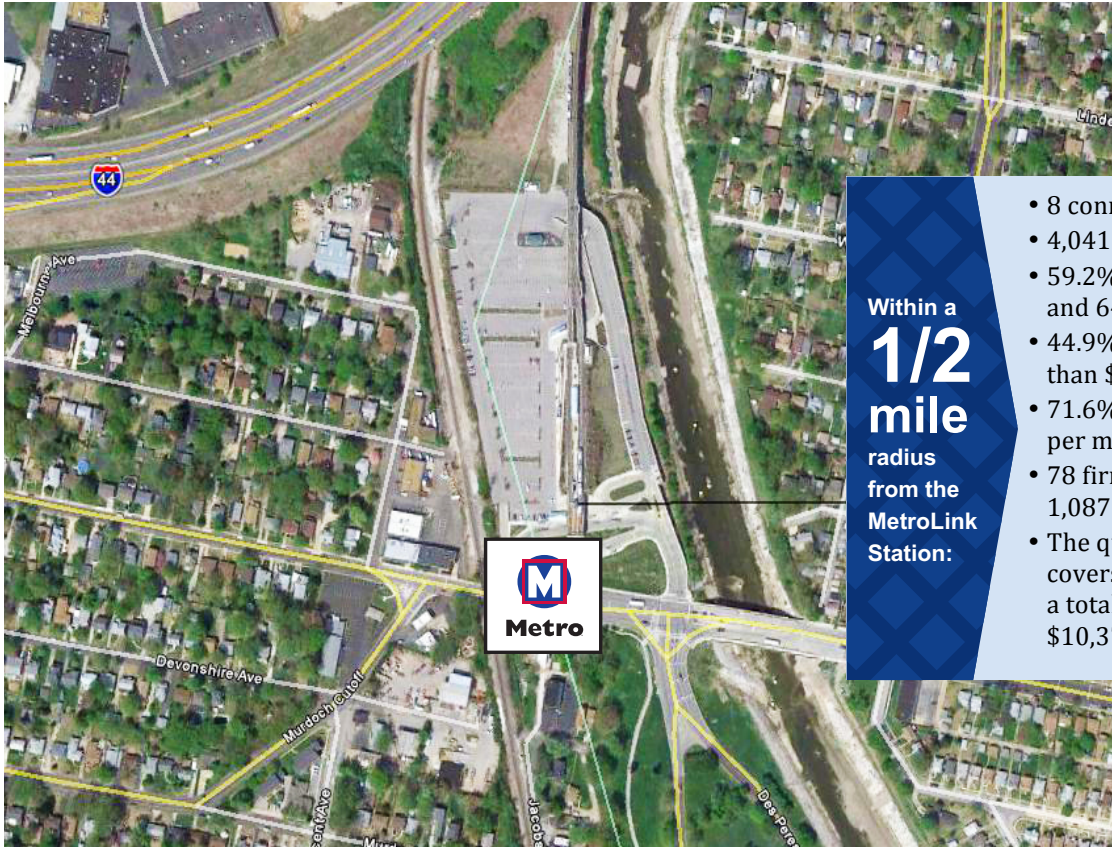




# Shrewsbury - I-44 - Landsdowne

Work. Play. Everyday. Take Transit to go your way.



Within a **1/2 mile** radius from the MetroLink Station:

- 8 connecting MetroBus routes
- 4,041 population
- 59.2% population between 25 and 64
- 44.9% household income more than \$50,000
- 71.6% rentals priced below \$500 per month
- 78 firms and agencies employing 1,087 people
- The quarter-mile station area covers 381 lots on 20 blocks, with a total assessed value of \$10,379,020.



**1860**

Daily MetroLink boardings



Parking spaces at the station

**800**

The Shrewsbury I-44 Landsdowne Station is located at the border between the cities of St. Louis and Shrewsbury, near the intersection of Lansdowne Avenue and River Des Peres. The station serves an inner-ring suburban area with a mixed development pattern. The MetroLink Station, MetroBus transfer loop, and 800-space Park-Ride Lot occupy a significant portion of the quarter-mile station area. Most of the land on both sides of River Des Peres is developed with one- and two-story single-family detached homes. However, there is also a node of commercial and industrial uses near the intersection of Lansdowne and St. Vincent Avenues, adjacent to the MetroLink Station, and a number of two-

and three-story garden apartments along River Des Peres south of Lansdowne Avenue, across from Willmore Park.

This station has access to a Great Rivers Greenway trail along River Des Peres.

*Metro owns and operates a 12.8-acre parcel containing the MetroLink Station, MetroBus loop, and 800-space Park-Ride Lot.*

**Ground Lease or Air Rights opportunities available.**



**Kimberly M. Cella** • Executive Director  
314.231.7272 • <mailto:kcella@cmt-stl.org>



**John Langa** • Vice President Economic Development  
314.982.1418 • <mailto:jrlanga@metrostlouis.org>